

Written comments or questions should be submitted by 4pm on Wednesday, December 15, 2021 by either:

- E-mailing [khammes@purdue.edu](mailto:khammes@purdue.edu)
- Mailing to: Brown County Parks & Rec, PO Box 299, Nashville, IN 47448
- Or dropping off in-person to the Brown County Parks & Rec Office, located at Deer Run Park

Time for public comment and questions will also be provided at the December 15<sup>th</sup> meeting of the Brown County Parks Board. The BCPR Board meeting will be held at 5:15pm on Wednesday, December 15<sup>th</sup> at the BCPRD Office at Deer Run Park:

902 Deer Run Ln, Suite B  
Nashville, IN 47448

A virtual option for attending the meeting will also be provided. Please contact Michelle Mosley at (812) 988-5522 or [moslevmr@browncounty-in.us](mailto:moslevmr@browncounty-in.us) to request the details for the Zoom link.

# **DRAFT Brown County, Indiana 5-year Park and Recreation Master Plan**

## **2022 to 2027**

**A DRAFT Comprehensive Master Plan by the Brown County  
Park Board and the Brown County Parks and Recreation  
Department**

**Brown County Parks and Recreation Department  
902 Deer Run Ln, Suite B  
Nashville, IN 47448  
812-988-5503  
Website: [www.bcparksrec.com](http://www.bcparksrec.com)**

# Table of Contents

## Contents

Definition of the Planning Area .....	4
Purpose and Goals of the Plan .....	4
The Brown County Parks and Recreation Board/Department .....	5
The Brown County Parks and Recreation Board .....	5
The Brown County Parks and Recreation Department .....	6
Park Office .....	6
Mission .....	6
Departmental Vision and Goals for the Next Five Years .....	6
Staff .....	6
Volunteers .....	7
Existing Facilities and Programming .....	8
Facility Inventory .....	8
Deer Run Park .....	8
Property on 135 N .....	10
Salt Creek Trail .....	11
Sycamore Valley Community Center .....	13
Current Programs .....	13
Other Recreation Providers in the County .....	15
Budget .....	16
Natural Features and Landscape .....	17
Topography .....	17
Geology/Soils .....	20
Forest and Vegetation Resources .....	21
Water Resources .....	22
Man-made, Historical and Cultural .....	24
Brown County History .....	24
Industry in Brown County .....	24
Transportation Links .....	25
Social and Economic Factors .....	27
Population (2010-2020) .....	27
Economy .....	27
Housing (2019 data from US Census Bureau) .....	27
Education (2019 US Census Bureau estimates) .....	27
Accessibility and Federal Accessibility Standards .....	28
Statement of Accessibility for Anytown .....	28
Current Accessibility .....	29
Proposed Accessibility .....	30

Public Participation.....	31
Community “Open Houses” .....	32
Community Survey .....	37
Working Groups .....	41
Final Public Presentation of the Plan .....	44
Summary/Comparison of Public Input .....	45
Satisfaction with BCPRD Programming .....	45
Satisfaction with BCPRD Facilities.....	46
Ratings for Deer Run Park .....	47
Ratings for Salt Creek Trail .....	48
Average Usage of Parks, Recreational Areas, and Public Spaces .....	49
Frequency of Usage of Recreational Facility, Amenity or Service Use .....	50
Favorite Recreational Programs.....	51
Ideas for New Recreational Programs .....	53
Ideas for New Recreational Facilities .....	55
Emerging Themes .....	57
Needs and Issues Analysis .....	58
General Issues from Public and Board/Staff Input .....	58
Issues Specific to Deer Run Park.....	59
Priorities and Action Schedule .....	62
Priorities for 2022 to 2027 .....	62
Fundraising .....	63
BCPRD System-wide Action Schedule.....	65
Appendices: Brown County Parks and Recreation Master Plan Survey.....	66

## **Definition of the Planning Area**

The service and planning area for the Brown County Parks and Recreation Department (BCPRD) covers all of Brown County. Historically, BCPRD facilities and programs have served residents, neighboring communities, and tourists alike, and we remain committed to making our facilities and services available and accessible to anyone, regardless of resident status, ability to pay, or physical/mental ability. However, as part of this planning process the Brown County Parks and Recreation Department and Board are reaffirming our focus and responsibility to specifically serving the citizens and community members of Brown County.

## **Purpose and Goals of the Plan**

The BCPRD's purpose and goals in developing a Five-Year Parks and Recreation Master Plan are as follows:

- Gather feedback and input from as diverse a group of Brown County residents as possible, and report it in an accurate manner.
- Use national recreation standards, combined with a careful needs analysis, to create new strategic priorities for parks and recreation in the county.
- Create a plan that is dynamic and provides pertinent, useful information and guidance for the next five years in Brown County.
- Present the plan and gain its acceptance within the Brown County community.
- Submit the master plan to the Indiana Department of Natural Resources Division of Outdoor Recreation, adhering to the required timeframe for a draft, by Jan. 15 and finalized plans by April 15.
- Receive approval from IDNR for eligibility for application for Land and Water Conservation Fund (LWCF) grant programs.
- Use the plan as a springboard to apply for all applicable grants

# **The Brown County Parks and Recreation Board/Department**

## ***The Brown County Parks and Recreation Board***

The Park Board was first created in 1967, and was re-affirmed by county ordinance in 1976. The Board is structured according to the requirements of Indiana Code 36-10-3. Brown County has a six-member board that serves staggered four-year terms. The current Brown County Parks and Recreation Board is:

- Linda Hobbs, Board President  
Term Expires: December 31, 2021  
Appointed By: Judge  
Political Party Affiliation: Republican Party
- Kara Hammes, Board Vice President  
Term Expires: N/A – Extension Educator  
Appointed By: State Statute  
Political Party Affiliation: N/A
- Robert Sloman, Board Secretary  
Term Expires: December 31, 2023  
Appointed By: County Council  
Political Party Affiliation: Democratic Party
- John Kennard  
Term Expires: December 31, 2022  
Appointed By: County Council  
Political Party Affiliation: Republican Party
- Andi Bartels  
Term Expires: December 31, 2022  
Appointed By: Judge  
Political Party Affiliation: Democratic Party
- Dan Acres  
Term Expires: December 31, 2024  
Appointed By: County Commissioners  
Political Party Affiliation: N/A

## ***The Brown County Parks and Recreation Department***

### **Park Office**

The main office for the BCPRD is at Deer Run Park, located at 902 Deer Run Ln, Suite B, Nashville, IN 47448. The phone number is: (812) 988-5522.

Website: [www.bcparksrec.com](http://www.bcparksrec.com) Facebook: [www.facebook.com/BCParksAndRec](https://www.facebook.com/BCParksAndRec)

### **Mission**

- The Mission of the Brown County Parks and Recreation Department is: “To improve the quality of life by providing a variety of recreational, leisure and aesthetic opportunities for all citizens, while conserving and enhancing the natural environment for the benefit of present and future generations.”

### **Departmental Vision and Goals for the Next Five Years**

- The Brown County Parks and Recreation Department will offer a level of service appropriate to the size and growth of the community.
- The Department should act as a central part of daily quality of life in the community, with a focus and specific commitment to best serving the citizens and community members of Brown County.
- The BCPRD will provide new opportunities for exercise, fitness and wellness for the community at large.

### **Staff**

- Director: Mark Shields  
Hired: December 7, 2009
- Office Manager: Michelle Mosley  
Hired: April 19, 2010
- Program Specialist: Andy Rudd  
Hired: December 16, 2015
- Groundskeeper: Brian Faulkner  
Hired: October 11, 2021 (County Hire Date: November 16, 2020)
- Plus approximately ten seasonal employees each year

## **Volunteers**

In these times of shrinking budgets, rising costs of energy, operations and maintenance, and increasing recreation demand, volunteers from Brown County and the surrounding areas provide us with incredibly valuable assistance. These amazing volunteers are leading programs, coaching and officiating youth sports, assisting us in maintaining and improving the parks themselves and much more. In 2019 alone, over 150 volunteers provided more than 2,700 hours of service to support BCPRD programming, sports leagues, and facility maintenance. Without our dedicated volunteers we would not be able to provide the quality of parks and programs that we currently enjoy.

The BCPRD can always use more help, and no matter what your skills, interests, or abilities are, we can find fun ways to put them to use in support of Brown County's parks. The Department invites all interested persons to participate in our parks volunteer system; please contact Mark Shields, volunteer coordinator, at (812) 988-5503 for more information.

## Existing Facilities and Programming

### *Facility Inventory*

Brown County Parks & Recreation has a limited inventory of parks and public spaces that it owns and/or manages. The following is a brief synopsis of these four properties:

#### **Deer Run Park**

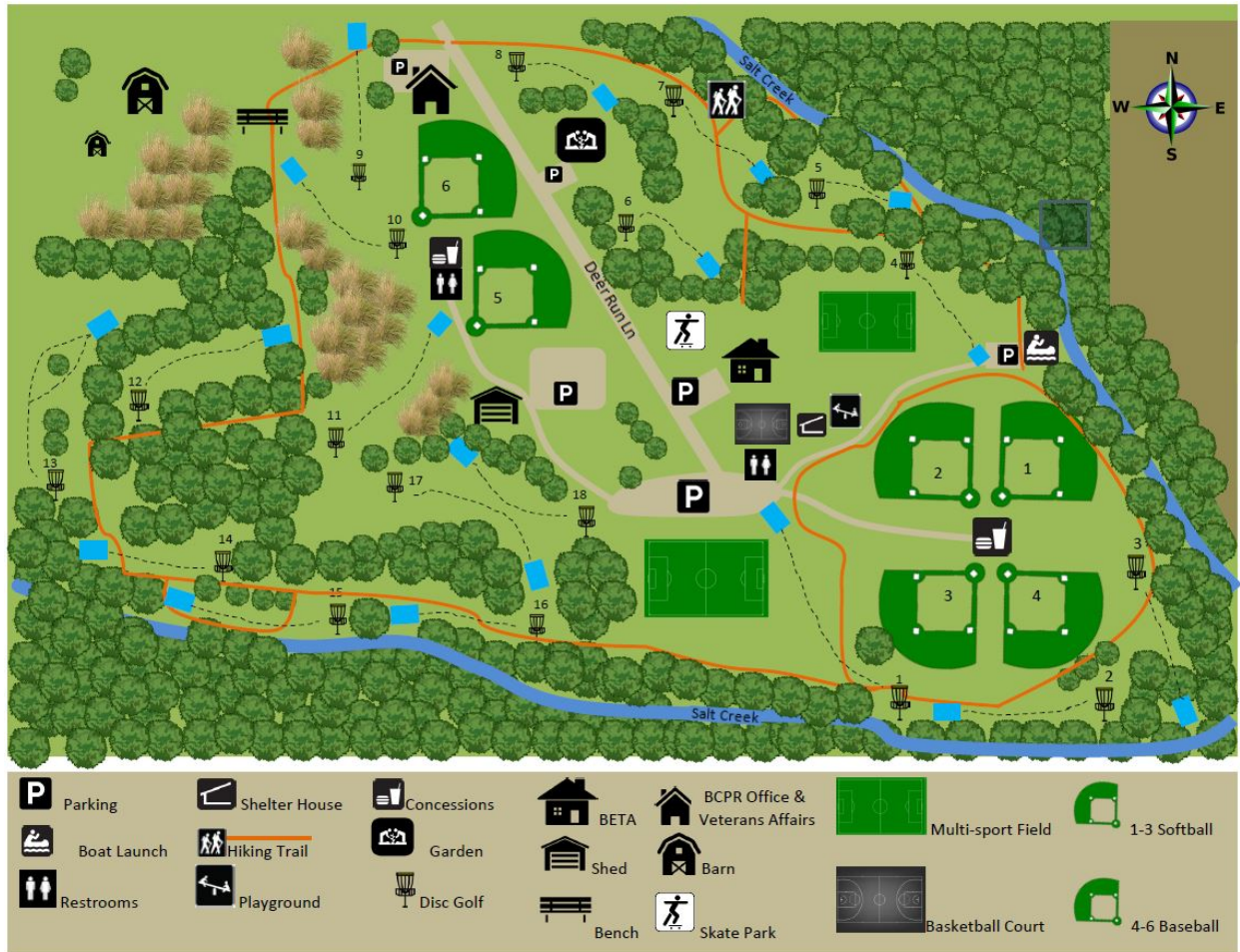
Deer Run Park is located at 902 Deer Run Ln. Land for the park was purchased in 1986 and consists of 72 acres, including a portion of the North Fork of the Salt Creek.

Features include one open-sided picnic shelter house with tables and a permanent grill, an area containing several playground structures (the two newest of which were built in 2017), Victory Skate Park (opened in 2019), an 18-hole disc golf course, a fenced community garden with 45 plots, one basketball court, a boat launch, a 2+ mile mowed walking trail, various benches and a fire ring area, two areas of open field that are used for 8 soccer fields during season, six baseball/softball fields and two concession stands.

- Four separate parcels – two owned solely by Brown County Parks & Recreation, one owned solely by the Brown County Commissioners, and one owned jointly by Brown County Parks & Recreation and the Brown County Commissioners. This means that certain plans or future developments may require approval by groups other than the BCPR Board.



## Map of Amenities at Deer Run Park



### Outline of parcels contained by Deer Run Park

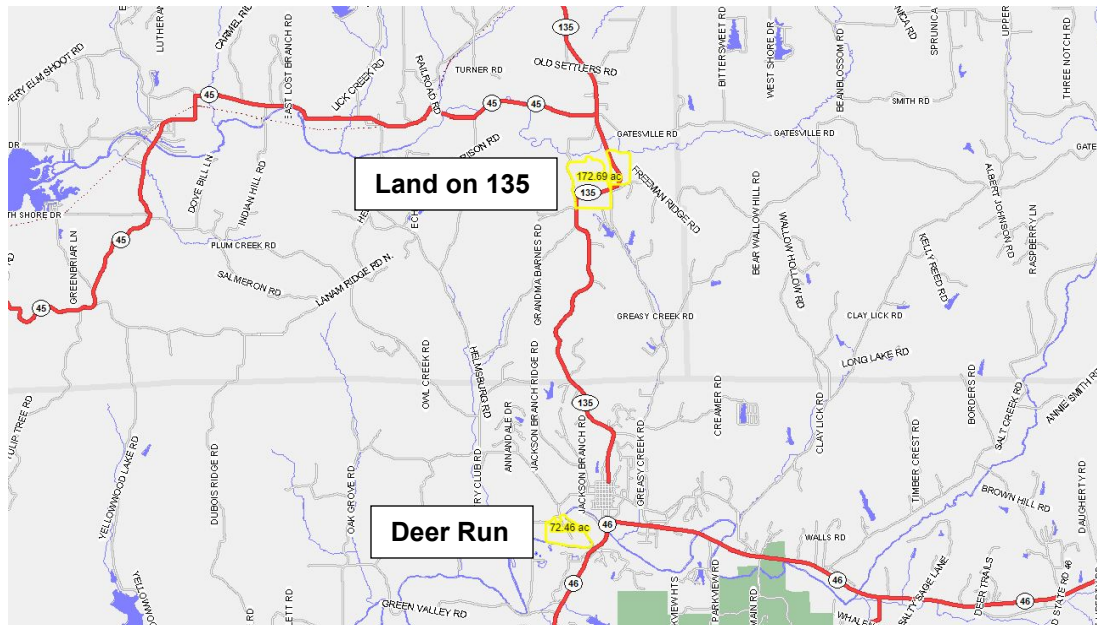




## Property on 135 N

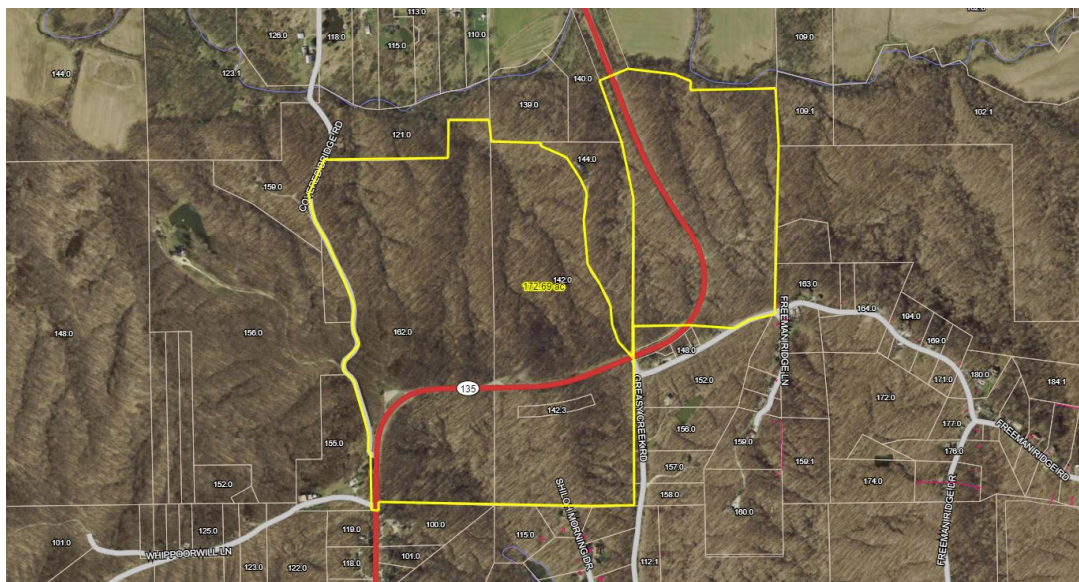
This property consists of various parcels and is a total of 140+ acres. Located approximately 3.8 miles north of downtown Nashville, IN along both sides of 135 N, this property was donated to Brown County Parks & Recreation by the Indiana DNR in 1985, for the express purpose of putting the property under local stewardship as a park land for public view, use, and enjoyment.

## Comparison of location of Deer Run Park vs Land on 135 N



*Deer Run Park and the land on 135 N are approximately 4.6 miles apart.*

## Outline of parcels owned by Brown County Parks & Rec on 135 N



The deed granting the property to the BCPRD specifies that the property should maintain “in perpetuity the scenic values which have made the parkway a scenic drive from Bean Blossom to Nashville, Indiana” and contains several restrictions in order to ensure that this occurs, including:

- “Shall follow selective forest management by not clear-cutting the land so that the scenic beauty of the property shall be preserved”;
- “Any lands in this deed within 300 feet of the centerline of State Road 135 shall not have any timber removed nor manmade developments placed upon said lands”

These deed restrictions, along with the extremely rugged terrain, and the fact that the parcels are non-contiguous and span a busy state highway drastically limit potential development opportunities. However, there are a handful of approved developments already on the property, including:

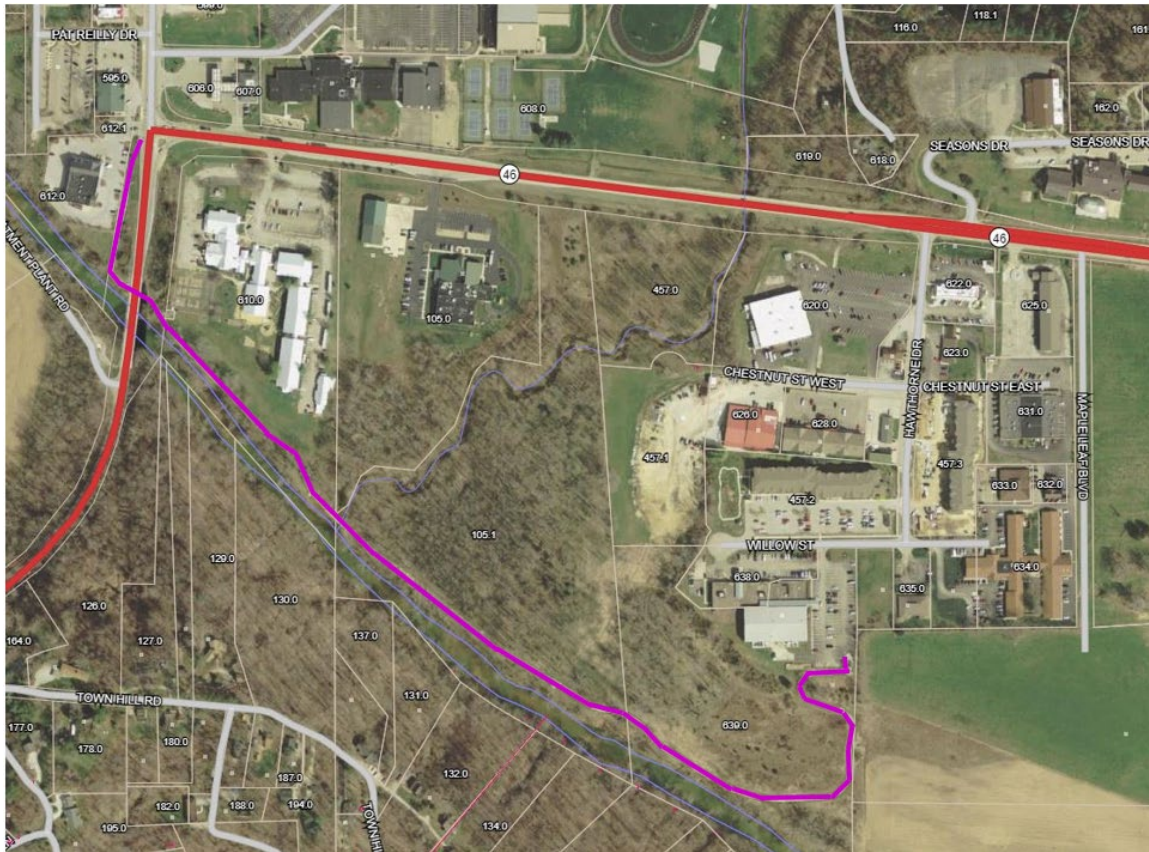
- The popular “Bean Blossom Overlook”
- A communication tower built by the Brown County Commissioners on in 2019 on approximately 3 acres granted for the purpose
- An easement that was granted across a section of the property to a private landowner 2021. The easement is restricted to use for accessing a single-family dwelling and BCPRD retains the ability to use the easement to access areas of its property.

Some selective logging has occurred on the property in the past, and an approximately 20-acre area was clear-cut on the south side of IN-135, across from the Bean Blossom Overlook, in 2019. Otherwise, the property remains mostly undeveloped.

### **Salt Creek Trail**

The Salt Creek Trail is a .75-mile-long, paved, multi-use trail that opened in 2013. Trailheads are located behind the Brown County YMCA (105 Willow St, Nashville, IN) and by the CVS (292 S Van Buren St, Nashville, IN). Trail amenities include several benches, picnic tables, a mowed “wetland trail” with interpretive signage, a small fitness playground area, and soon a series of “Story Walk” kiosks sponsored by the Brown County Public Library.

### Route of the portion of the Salt Creek Trail that opened in 2013



A new, approximately .75-mile-long, portion of the Trail will open sometime in 2022. This trail section will originate near the North Entrance of Brown County State Park, in the pool parking lot area (1801 Indiana 46 East, Nashville, IN) and end at the Hesitation Point Pottery and Red Barn Jamboree Campground properties (51-71 Parkview Rd, Nashville, IN). A trail section connecting this portion of the trail with the 2013 trail section is planned, but no official route has been approved and there is no known timeline for completion.

The property for the Salt Creek Trail is owned by the Brown County Commissioners, but trail maintenance (mowing, plowing, clean-up, etc) is handled by the BCPRD.

### **Sycamore Valley Community Center**

The Sycamore Valley Community Center (located at 746 Memorial Dr, Nashville, IN 47448) – This building is owned by the county, but maintenance and scheduling is managed by BCPRD. The Brown County SCCAP (South Central Community Action Program) Office is housed here, but the building is otherwise used by senior groups for activities like bridge and cards, as a meeting location for community organizations and AA, and occasionally rented as an event space for gatherings like baby showers, etc. There is a small fee to book the space. Call the BCPRD Office at (812) 988-5503 to schedule.

### ***Current Programs***

Brown County Parks & Recreation offers a diverse array of programs that attract many different kinds of users. BCPRD has responded to the needs of our community by providing traditional programs, like youth and adult sports leagues, as well as non-traditional activities at the request of users. The following is a snapshot of some of the programs, classes, and activities that are currently offered, or have been offered in recent years, by BCPRD staff, volunteers or with our partners:

- Youth Sports Leagues
  - Baseball and Softball (T-ball, Youth Softball (8U; 10U; 12U), Rookie League, Minor League, Major League, and Babe Ruth Baseball)
  - Basketball (Preschool – 4<sup>th</sup> Grade (PreK & K; 1<sup>st</sup> & 2<sup>nd</sup>; 3<sup>rd</sup> & 4<sup>th</sup>) and 5<sup>th</sup> Grade – 9<sup>th</sup> Grade (5<sup>th</sup> & 6<sup>th</sup>; 7<sup>th</sup>-9<sup>th</sup>))
  - Cheerleading (Kindergarten – 2<sup>nd</sup> Grade and 3<sup>rd</sup> Grade – 6<sup>th</sup> Grade)
  - Soccer (U4, U6, U8, U10, U13)
  - Wrestling
- Adult Sports Leagues
  - Adult Winter Basketball
  - Co-Rec Softball
- Special Events
  - Daddy/Daughter Dance
  - Easter Egg Hunt



- Cardboard Regatta (Held at Sweetwater Lake; participants build a cardboard boat and then test who can stay afloat the longest while paddling out and back to a specified point on the water)
- Annual Golf Outing
- Hillbilly Ninja Warrior (Obstacle course during the Brown County Fair)
- Outdoor Movie Nights
- Fall-O-Ween Party (s'mores, hayride, bounce house, and other fall activities)
- Fear Run at Deer Run (Haunted trail/haunted house)
- Trick-or-Treat on the Trail
- Cabin Fever 5K (Part of Mag 7 Race Series)
- Other Amenities
  - Batting Cage
  - Outdoor Basketball Court
  - Canoe/Kayak Launch Site
  - Community Garden
  - Disc Golf Course
  - Fishing in Salt Creek
  - Playground
  - Victory Skate Park
  - Walking Trails
  - Volleyball Net

### ***Other Recreation Providers in the County***

The following is a partial list of other recreation providers in Brown County:

- Brown County Community YMCA – gymnasium; fitness equipment and weights; indoor track; indoor pool; sauna; climbing wall; fitness programming; youth summer day camp
- Brown County School District – School system offers certain youth sports leagues; elementary school playgrounds are available for public use outside of school hours; BCPRD uses school facilities/gymnasiums for some sports leagues
- Brown County State Park – campgrounds and cabins; hiking, horseback riding, and mountain biking trails; playgrounds; shelter houses; picnic areas; fishing; outdoor swimming pool; Nature Center and interpretive programming; horse stable; inn with restaurant and indoor waterpark; tennis courts
- DNK Presents and Brown County Bikes – Provides outdoor recreation focused programming, mountain bike instruction, and bike rentals
- Parkview Church of the Nazarene — Provides Christian-based youth indoor soccer and basketball leagues
- Boy and Girl Scout Troops
- Summer Youth Camps – Camp Gallahue, Camp Moneto, Camp Palawopek, CYO Camp Rancho Framasa, Gnaw Bone Camp, Happy Hollow Camp, Lutheran Hills, Waycross, and others
- Yellowwood State Forest and Yellowwood Lake – campgrounds; hiking and horseback riding trails; playgrounds; shelter house; picnic areas; boat rental; fishing
- Yoga/Fitness providers – Simply Fitness and Everybody Can Do Yoga

## Budget

The BCPRD budget has remained mostly flat in recent years, with the exception of annual raises for employee salaries, and we anticipate that this will be a continuing trend. In addition to the county budget, BCPRD also raises money each year through program fees and sponsorships. As shown in the table below, this additional revenue is critical to BCPRD's ability to cover its annual operating costs.

Budget and funding limitations have a direct effect on several aspects of our operations and maintenance, including the number of staff hired, level of maintenance performed, replacement of vital equipment, and amount of new programming created.

Year	Total County Budget (includes payroll, utilities, maintenance and upkeep)	Operating Costs (excludes programming costs)	Profit (Total programming income – total programming costs)	Remaining Balance (goes to BCPRD Non-Reverting Fund)
2017	\$150,855.00	-\$172,479.27	\$27,949.11	\$6,354.84
2018	\$150,410.00	-\$167,440.90	\$42,137.64	\$25,106.74
2019	\$155,527.00	-\$163,383.91	\$38,118.47	\$30,261.56
2020	\$157,436.00	-\$208,878.54	\$23,056.69	-\$28,385.85
2021	\$168,028.00			
2022 (projected)		--	--	--

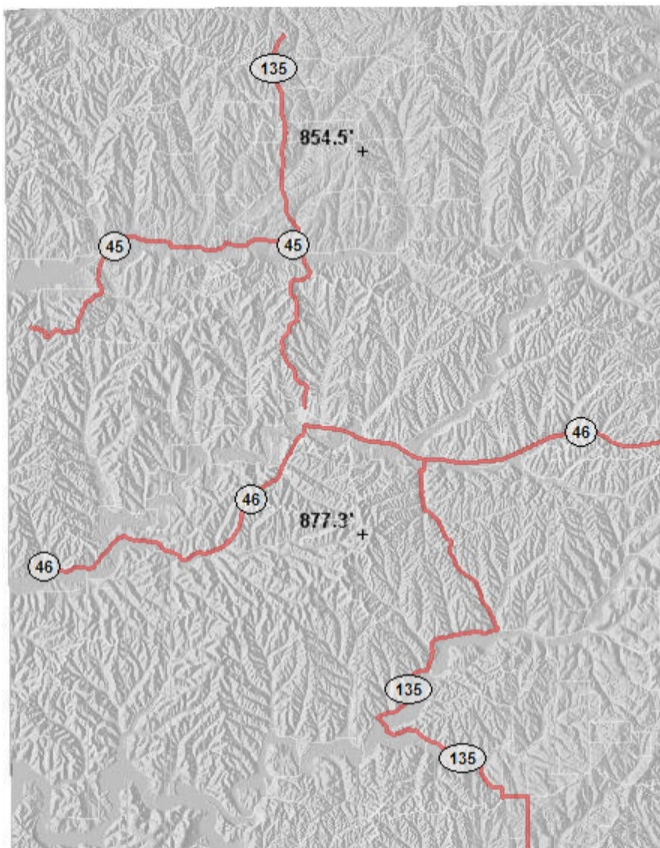


# Natural Features and Landscape

## Topography

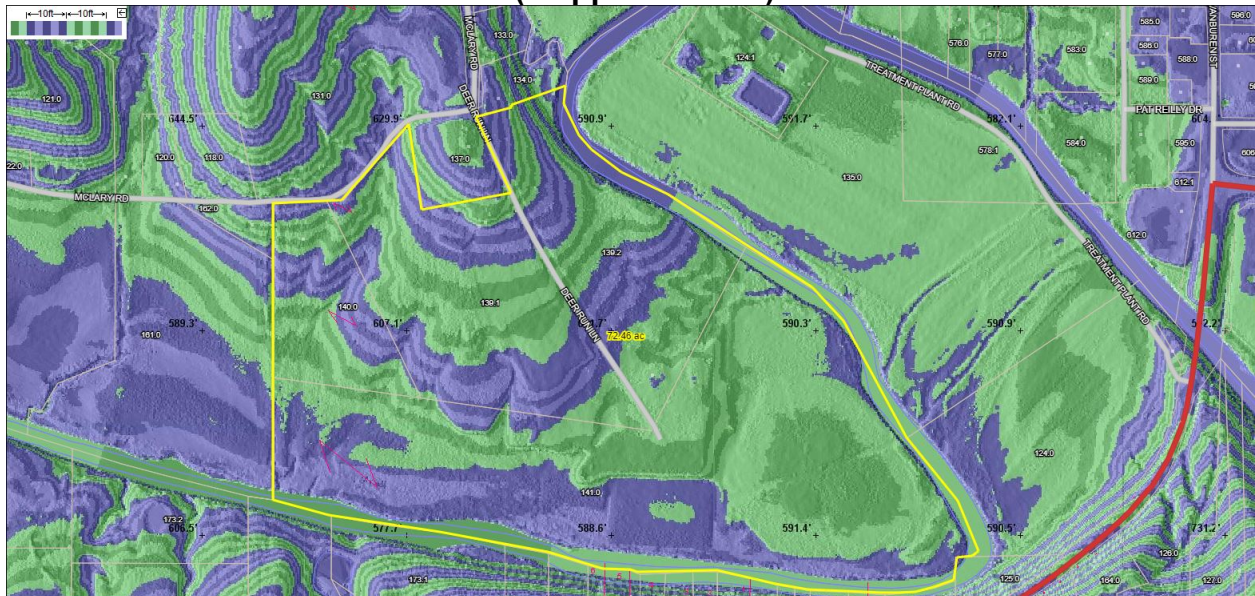
Brown County has been described as a “land of scenic hills, ridges, and valleys.” The USDA “Soil Survey of Brown County and Part of Bartholomew County Indiana” (survey conducted in 1984 and published in 1990), classifies Brown County as part of the Norman Upland, “a severely dissected plain consisting of long, narrow ridges, steep slopes, and narrow stream bottoms.” This publication further describes “three major ridge systems that extend across Brown County in a northeast-southwest direction. Three major streams with valleys about 0.25 to 0.5 miles wide flow parallel to these ridges, in a southwest direction. These are Bean Blossom Creek, in the northern part of the county; the North Fork of Salt Creek, in the central part; and the Middle Fork of Salt Creek, in the southern part.”

## Topography of Brown County (mapped in 2011)

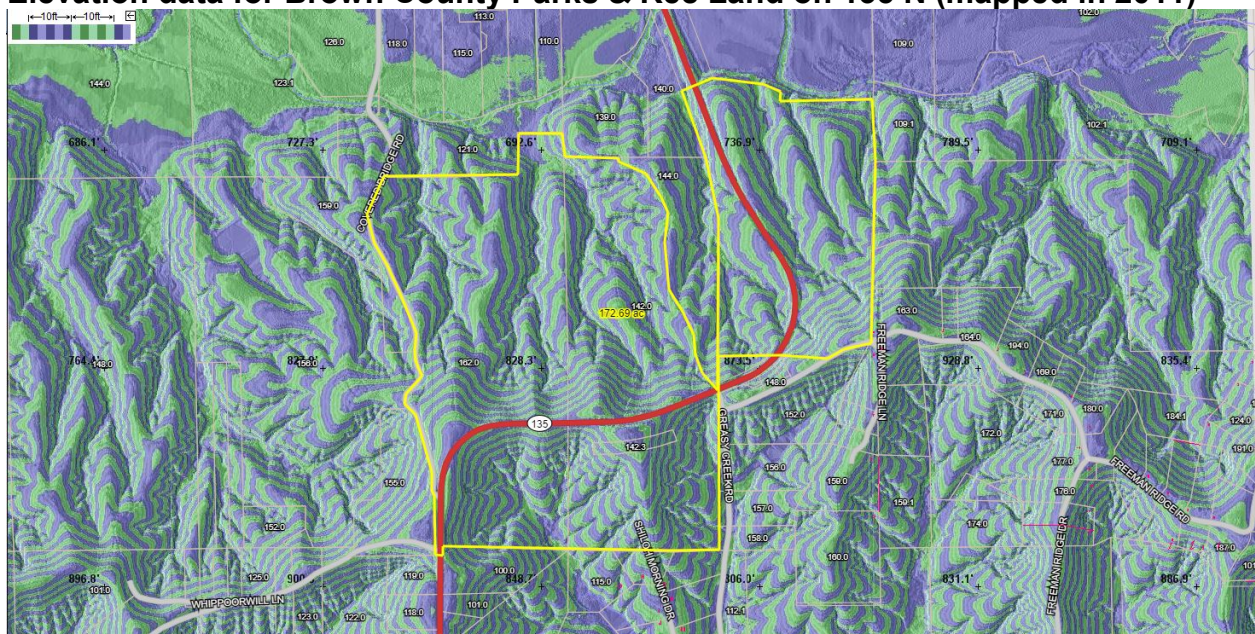




**Elevation data for Deer Run Park (mapped in 2011)**



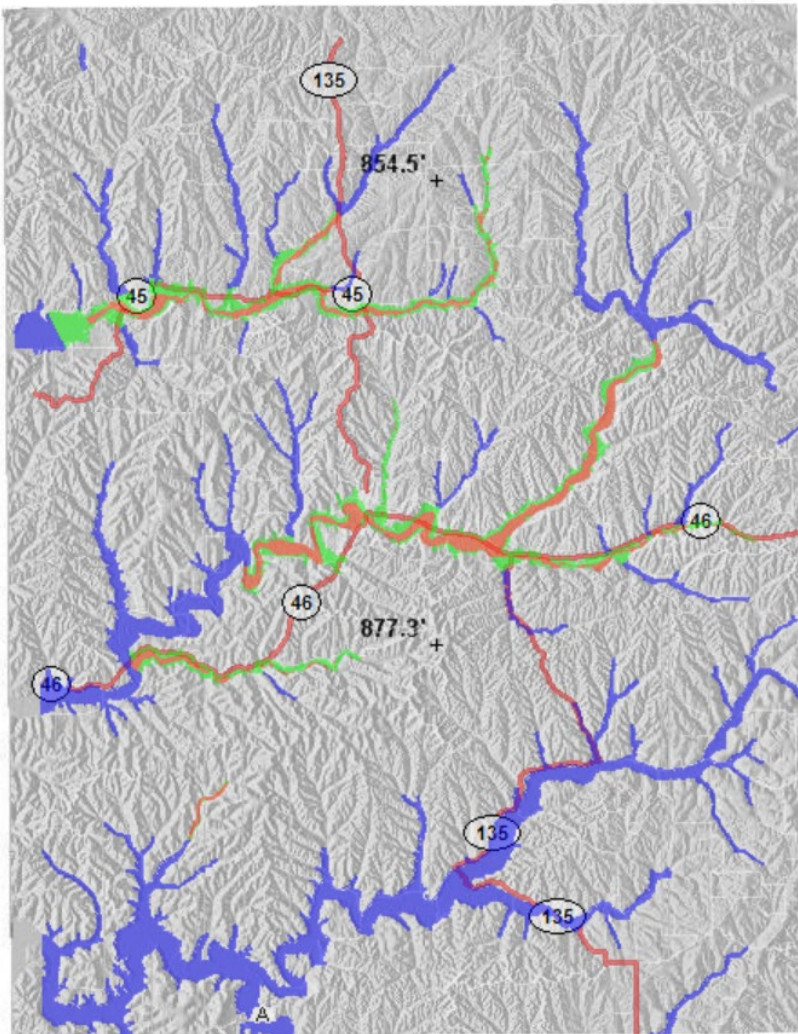
**Elevation data for Brown County Parks & Rec Land on 135 N (mapped in 2011)**





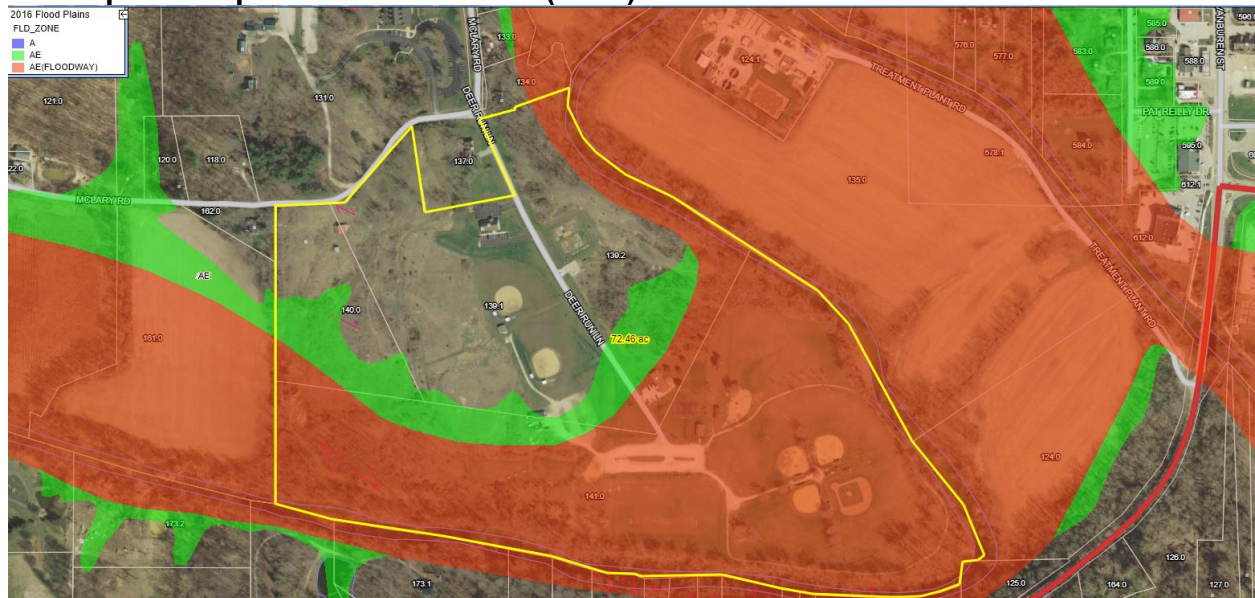
Although the overall steep, rugged, and heavily forested terrain of Brown County provides some excellent opportunities for outdoor recreation, it also presents challenges for almost all types of long-term development. Lowland, or “flat” areas of ground within the county are commonly classified as floodplain or floodway, which affects existing structures, amenities, and developments, while also further complicating and limiting any future development plans.

### Flood plain map for Brown County (2016)



Flood Plains – **Zone A (blue)** = 1% annual chance of flooding (approximate study), **Zone AE (green)** = 1% annual chance of flooding (detailed study), and **Zone AE (Floodway) (red)** = Area of the floodplain containing the channels of a river or stream and those portions of the adjoining floodplain which are required to carry and discharge the peak flood water flow.

## Flood plain map for Deer Run Park (2016)



Flood Plains – **Zone A (blue)** = 1% annual chance of flooding (approximate study), **Zone AE (green)** = 1% annual chance of flooding (detailed study), and **Zone AE (Floodway) (red)** = Area of the floodplain containing the channels of a river or stream and those portions of the adjoining floodplain which are required to carry and discharge the peak flood water flow.

### Geology/Soils

Based on information provided by the Indiana Geological Survey and the USDA National Resources Conservation Service (NRCS), the geology of Brown County is made up of “Mississippian age rocks...that are mostly siltstone rich in silica. More than 330 million years ago, these rocks were part of a vast delta system but now make up the bedrock known as the Borden Group, a collection of resistant rock types that form the Norman Upland.”

The majority of Brown county consists of “steep, well-drained, shallow or stony soils in weathered sedimentary rocks” (mainly Berks-Gilpin-Weikert, with a small amount of Corydon-Weikert-Berks). There is a small pocket of “sloping, well-drained, silty soils with frangipans” (Cincinnati-Vigo-Ava) in north central Brown County, and “sloping, well-drained, silty soils in loess and weathered limestone” in the southeast corner of Brown County. The creek bottom lands along the three creek valleys described in the above

“Topography” section consist of “nearly level, well and poorly drained, loamy soils on floodplains” (Stendal-Haymond-Wakeland-Nolin).” Ice Age glaciers never actually reached all of Brown County, but evidence of them can be seen to the north and east of Brown County State Park.

Because of the combination of the steep slopes, soil types, and location of floodplains and floodways, a majority of sites in Brown County have “severe” limitations for building or recreation use, meaning that soil properties or site features are so unfavorable or so difficult to overcome that limitations can be offset only by significant increases in construction costs, special design, intensive maintenance, limited use, or by a combination of these measures. Clearly these challenges can be, and have been, overcome for development in the county, it’s just an added challenge when considering the best use of limited resources when maintaining current BCPR facilities and amenities, and balancing against decisions for future development.

### **Forest and Vegetation Resources**

According to the USDA, Brown County has the highest concentration of forested land of any of Indiana’s counties. It is estimated that 80-90% of the county’s acreage is covered in forest and woodland of various ages and compositions. Brown County’s forests are known for several hardwood tree species and have historically been dominated by oak and hickory trees. However, in recent decades as human intervention has prevented historically common forest disruptions (such as wildfires), forest succession has proceeded and oak and hickory species are no longer the dominant seedling species in the understory. Instead, sugar maple, red maple, and American beech now make up the majority of the forest understory and have the potential to become the dominant species in the forest, if woodland management techniques aren’t widely implemented.

Invasive plant species are a management challenge in both woodland and open meadows alike. Some of the primary invasive plants of concern in Brown County include: bush honeysuckle, Japanese stiltgrass, Japanese barberry, Tree of Heaven, privet, wintercreeper, Autumn Olive, garlic mustard, and others. The BCPRD has

significant invasive species management issues at Deer Run Park, along the Salt Creek Trail, and in the wooded 135 N property. Funding and manpower limitations present significant obstacles to controlling invasive species on these properties, but thankfully BCPRD has been able to partner with the Brown County Native Woodlands Project for occasional “Weed Wrangle” events where their volunteers provide invasive species removal services and public education.

The BCPRD has also been approached by The Nature Conservancy about entering portions of the 135 N property into their “Forest Bank” program which would provide periodic payouts to the BCPRD for a specified number of years while putting TNC in charge of woodland management, invasive species control, and timber harvest on that property. The BCPR Board has postponed any decision on the Forest Bank program until after the 5 Year Parks Master Plan is completed and accepted.

### **Water Resources**

There are a several major surface water resources in Brown County. In addition to the primary bodies of water outlined below, numerous smaller named and un-named branches, man-made ditches and other waterways, ponds, and small lakes make up the water resources in Brown County.

- Salt Creek – The Salt Creek is a tributary of the East Fork of the White River and flows through Brown County to Lake Monroe. The North and Middle Forks are the primary portions of the Salt Creek in Brown County, although a small portion of the South Fork flows into the south-central part of the county. Several significant flooding events have been experienced in recent decades due to the Salt Creek. Deer Run Park borders a section of the North Fork of the Salt Creek. The Salt Creek provides opportunities for paddling, fishing, and bird watching, but water levels vary significantly throughout the year. This fact, combined with frequent log jams and downed trees, means that portaging is often required if trying to paddle any significant distance on the Salt Creek.
- Lake Monroe (or Monroe Reservoir) – This is the largest man-made body of water in Indiana at 10,750 acres total. While only 12% of the physical surface

area of Lake Monroe lies in Brown county (in the southwest corner of the county), Brown County makes up 56.1% of the watershed area. Lake Monroe provides opportunities for fishing, swimming, and boating, while also serving as a major source of drinking water for Brown County residents.

- Lake Lemon – At 1,650 acres, Lake Lemon is the 11<sup>th</sup> largest lake in Indiana. The eastern half of the lake is located in the north-west corner of Brown County. Lake Lemon was created via the damming of Bean Blossom Creek (construction began in 1953) with the intent to create a primary water source for nearby Bloomington, as well as a recreation area and flood control project for Bean Blossom Creek. The lake is bounded by public and private property, with numerous residences along the shoreline.
- Yellowwood Lake – 133 acres, at about 30 ft deep. Construction was completed in 1933. Fishing and some types of boating are permitted, but swimming is not allowed. Row boat rentals are available at the Yellowwood State Forest Park Office.
- Cordry and Sweetwater Lakes – The two lakes are located in the north-east corner of Brown County and both are spring-fed, with Cordry Lake at 160 acres and Sweetwater Lake at almost 275 acres. The lakes are contained within the Cordry-Sweetwater Conservancy District, an area of 2,300 mostly privately-owned acres. Development is primarily limited to single-family dwellings.
- Ogle Lake (~18 acres) and Stahl Lake (~6 ares) – Both are located in the Brown County State Park and each one has a dedicated trail that traverses around the lake perimeter; fishing is permitted, but no swimming
- Bean Blossom Creek — Runs through the north west corner of the county and connects to Lake Lemon. Categorized as severely “impaired” by the Indiana Department of Environmental Management based on recorded levels of *E. coli* contamination.

The Salt Creek, Lake Monroe, Lake Lemon, and Yellowwood Lake provide the primary water-focused recreation opportunities in Brown County. There is potential for greater use of the stream corridor of the Salt Creek for trails and water access, which should be explored further.

# **Man-made, Historical and Cultural**

## **Brown County History**

Brown County was established in 1836 in the rolling hills of southern Indiana, named for General Jacob Brown of the War of 1812. Founded as a pioneer colony, original settlers drew their wagons from Kentucky, Tennessee, Virginia, and the Carolinas in search of new land. This pioneering spirit would remain and reprise itself over the course of the coming centuries.

By the early 1900s, a new type of colony had formed, and Brown County was christened as “Peaceful Valley” by a group of Chicago-based artists. Inspired by the majestic landscape and colorful locals, these painters spread the word of Peaceful Valley far and wide. Soon, art students followed, in addition to writers, potters, weavers, naturalists, and photographers, establishing an art colony in the heart of Nashville that continues to this day.

## **Industry in Brown County**

According to the Brown County Economic Development Plan published in 2019, three industries make up over 45% of the employment opportunities in Brown County: Government, Accommodation and Food Services, and Retail Trade. In fact, the USDA Economic Research Service (ERS) categorizes Brown County as having a “Recreation-Dependent Economy.” This category designation is determined from three components: the share of employment in entertainment and recreation, accommodations, eating and drinking places, and real estate; the share of personal income from these same categories; and the share of vacant housing units that are for seasonal use. In Indiana, Brown County is one of only seven total counties with this designation (7.6%).

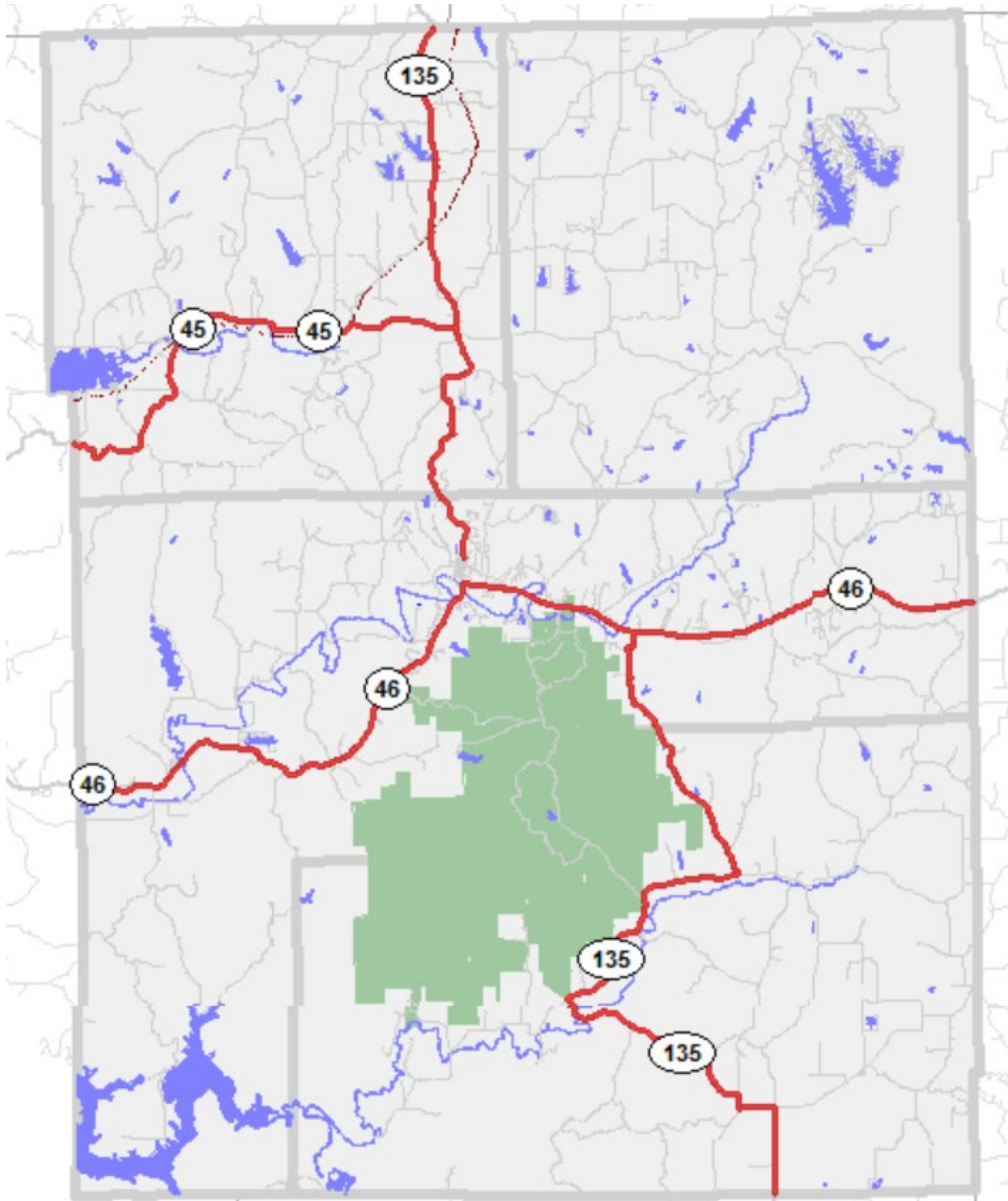
The availability and focus on recreation in Brown County offers exciting opportunities for BCPRD. However, research also shows that, on average, “Recreation Counties” have lower earnings per job than Non-Recreation counties. BCPRD must remain aware of the affect of charging for programming on the ability of people to participate, and will continue to offer sliding scale and reduced-fee options whenever feasible.



### **Transportation Links**

Nashville – the county seat and only incorporated area of Brown County – sits at the intersection of Indiana State Road 135 and Indiana State Road 46. Indiana State Road 45 comes into the northwestern part of the county and intersects with State Road 135 N in the small, unincorporated area known as Bean Blossom. There are no interstate highways or municipal airports in Brown County.

### **Map of major roadways in Brown County**



Nashville is essentially equidistant from the cities of Columbus, IN and Bloomington, IN (approximately 25-30 minutes, or 18 miles, to the east and west respectively). The nearest large metropolitan cities are Indianapolis, IN (approximately 1 hour, or 60 miles, to the north) and Louisville, KY (approximately 1.5 hours, or 86 miles, to the south east).

Numerous county roads remain unpaved, or are overdue to be repaved, which presents transportation challenges – especially when combined with the steep topography and during inclement weather. Brown County has very limited public transportation options, does not have a complete sidewalk system, and lacks a network of safe bicycle and pedestrian infrastructure.

These issues are of concern to all Brown County residents, but are especially critical for the BCPRD when considering public access to Deer Run Park. Although the park is less than one mile from Nashville, there is no safe walking or biking path that can be used to access Deer Run. Especially with the recent addition of Victory Skate Park to Deer Run, it is becoming more and more common to see kids walking along the side of Helmsburg Road – a busy main thoroughfare out of Nashville – to access Deer Run Park. Options for a trail section to connect Deer Run Park to town have been discussed previously, but currently no funding, approved path, or timeline for completion identified. The BCPR Board has identified the development of a safe, multi-use trail to access Deer Run as one of its top priorities in the coming years.

## **Social and Economic Factors**

### **Population (2010-2020)**

- According to the 2020 US Census, Brown County had 15,475 residents.
  - 94.1% White; 0.4% Black or African American; 0.2% American Indian; 0.4% Asian; 1.7% Hispanic or Latino; 4.8% some other race.
- The 2020 Census shows a 1.5% population increase since 2010.
- Based on 2019 estimates from the U.S. Census Bureau
  - 49.4% Male; 50.6% Female.
  - Median Age: 50 (Data USA <https://datausa.io/profile/geo/brown-county-in>)
  - 11% of population under 65 years of age had a disability.
  - 1.8% of population speaks a language other than English at home.

### **Economy**

- According to the July 2021 data from the U.S. Bureau of Labor Statistics, Brown County had a 3.7% unemployment rate.
- Median household income in 2019 dollars: \$61,030.
- Families below poverty level: 10.5%.
- Largest employment areas in Brown County: Government, Accommodation and Food Services, and Retail Trade

### **Housing (2019 data from US Census Bureau)**

- Average household size: 2.41
- 8,817 total housing units.
- 84.4% of homes owner-occupied

### **Education (2019 US Census Bureau estimates)**

- 92.1% of population high school graduate or higher.
- 28.9% Bachelor's degree or higher.

## Accessibility and Federal Accessibility Standards

**THIS SECTION IS STILL BEING RESEARCHED AND COMPLETED – TEXT BELOW IS FROM THE INDIANA DNR MASTER PLAN TEMPLATE.**

### Statement of Accessibility for Anytown

“The APRD makes it a part of our mandate to provide reasonable modification under the law for people with disabilities to all of our programs, activities and services. We strive to provide access for people with physical and mental disabilities. Information on our commitment to accessibility is posted at all of our facilities, online and at City Hall.”

The 1990 Americans with Disabilities Act requires that local governments with more than 50 employees designate at least one person to act as ADA compliance coordinator for the entire government unit. As a best management practice, Anytown Parks and Recreation has designated our own ADA coordinator, Park Superintendent Pat Schmo. Any person or persons who have complaints, grievances or comments related to accessibility may contact Superintendent Schmo at: (555) 555-1212 (voice/TT); Anytownparks@anytown.in.us, or any staff member of the Anytown Parks and Recreation Department staff, or any member of the Anytown government. All comments, inquiries, etc., will be replied to within five business days.

The APRD contacted the Hoosier County Office on Aging, and the Hoosier Regional Center for Independent Living to help us conduct a new accessibility self-evaluation in May of 2015. The following areas were evaluated and the results are bulleted below:

- Policies: Park Rules and Regulations; Facility Use and Rental Requirements; and the Recreation Activities Program Brochure — Minimally compliant with ADA except for availability of Braille signage on buildings, and copies of documents (or alternatives, such as electronic copies or on CD-ROM).
  - Estimated cost of compliance: \$5,000 to \$10,000, depending on type of signs, document delivery method, and quantity of copies.
- Recreation Programs and Activities: Youth; Senior; School Cooperation Program and Adult and Family Programs — Minimally ADA compliant; offering accessible

programs and activities, with additional access modifications as needed or requested.

- **APRD Park System Sites and Facilities** — The oldest set of restrooms in Anytown Park, near the lake, are not ADA compliant, and given the age of the structure, it may be less expensive to replace them with a new, ADA-compliant pre-built structure. The other area that APRD needs to improve is our lack of accessible routes between all park amenities, as well as ADA-compliant playgrounds and ingress/egress to playgrounds. APRD hopes to begin to *exceed* the 2012 ADAAG Standards, as more play areas and facilities have barriers removed over time.
  - Estimated cost of compliance: \$750,000 *minimum*.
  - Potential funding source: recreation impact fees, developer fees, local government bonds, grants, donations.

### **Current Accessibility**

Anytown has a few accessible shelter houses, picnic areas and restrooms in our parks and facilities, and meets the minimum ADA standards for those individual facilities, but without accessible routes to connect each of those amenities, they are not actually accessible. Anytown's parks dept. is slowly improving system-wide accessibility (as funding allows), by removing barriers, using adaptive technologies and moving activities and services to accessible sites. Any person who wishes to have some sort of accommodation made to provide or improve their use of APRD programs/activities/services should contact the APRD main office. The glaring exception is inaccessible play on our aging play structures and lack of accessible route connectivity (see Proposed Accessibility for details). Information about accessibility to programs, services and facilities, as well as potential accommodations, has been posted in English and Spanish, (and soon Braille) in conspicuous locations in each building owned and operated by the APRD. Persons that have questions about the posted accessibility information are welcome to call the APRD park staff at (555) 555-1212 (V/TT) anytime during business hours.

Progress on accessibility issues in Anytown has been hampered over the years by a lack of funding, but some significant improvements have been made. Our newest accessible feature is our fishing dock at Anytown Lake. This dock was universally designed to allow ease of use to the greatest extent possible for all users. Some of the features of this floating fishing dock include:

- Smooth, hard-surface accessible route all the way from the accessible parking lot to make it easier to see the route onto the dock, concrete texture and color change at the edge of the dock to indicate transition onto the dock itself.
- Notched, accessible railing with highly visible, evenly spaced gaps to allow users to land their fish easily without lifting them over the rail.
- Two fully accessible benches (one with a roof) built into the fishing platform for users to rest/fish in the sun or shade.
- Fishing rod holders and beverage holders built into the railing so users do not have to hold either item.
- A tactile molded plastic map of the lake bottom with Braille text and audio commentary (set into the railing) to illustrate what underwater fishing conditions exist surrounding the dock.

### **Proposed Accessibility**

Anytown has a strong need to connect all our accessible park amenities with accessible routes, and to replace our old play structures. The old play structures do not meet current Consumer Product Safety Commission guidelines, National Playground Safety Institute guidelines, or the 2012 Americans with Disabilities Act Accessibility Guidelines for Play Areas. The playgrounds need to be updated with age-appropriate play equipment that has safe and accessible surfacing underneath it, and accessible routes to the parking lots and all the other accessible amenities in our parks. The minimum cost estimate for this kind of upgrade is \$750,000. Ideal amenities will cost a great deal more. Funds are expected to come from recreation impact fees, developer fees, capital improvement budget, municipal bonds, community fundraising and grants. See the Priorities and Action Schedule later in this plan for a proposed timeline for completion of this facility redesign/redevelopment.

## **Public Participation**

The Brown County Parks & Recreation Department and Board recognizes our mission of service provision to the community. The best way for us to provide optimum service to the community is to ask what residents' needs, opinions and preferences are, and apply that information to all our future planning. Much of the data and input for this master plan was gathered during the “Enhancing the Value of Public Spaces: Creating Healthy Communities” (EVPS:CHC) process – a Purdue University Extension Signature Program focused on engaging communities on the issue of improving access to healthy foods and active living opportunities through public spaces. EVPS:CHC was undertaken in Brown County from late-2019 through mid-2021 and was funded through a collaboration between the Brown County Parks & Recreation Department, the Brown County Community YMCA, and the Town of Nashville Parks Board.

The EVPS:CHC process consisted of four in-person community “Open Houses” held in September, 2020 (24 attendees), a community survey that was available for response from September-December 2020 (336 responses), and four working groups that met virtually three times between November, 2020 and February, 2021 (22 community participants and 6 Purdue Extension facilitators).

In addition to the EVPS:CHC process, the Brown County Parks & Rec Board discussed the Plan development and priorities at several regularly scheduled Board meetings, including a designated time for public comment at the December 15, 2021 meeting. The draft plan and a summary were also posted and disseminated for review and written comment from December 3 to 15, 2021.

### **Community “Open Houses”**

Four in-person “Open House” sessions were held:

- Tuesday, September 15, 2020
  - 3:00-5:00 pm, Southern Brown Volunteer Fire Department, 4040 State Road 135 South (7 attendees)
  - 6:00-8:00 pm, Brown County Fairgrounds Exhibit Hall, 802 Memorial Dr (4 attendees)
- Wednesday, September 16, 2020
  - 11:00am-1:00pm, Brown County YMCA, 105 Willow St (9 attendees)
  - 4:00-6:00pm, Fruitdale Volunteer Fire Department, 5200 State Road 135 North (4 attendees)

Sessions were structured so that participants were able to come and go at any time during the 2-hour window, with materials set-up to allow for physical distancing, and masks or cloth face coverings required to be worn.



Each “open house” session focused on: providing information about the parks and public spaces currently in Brown County and seeking input on the assets, opportunities, and future vision for these spaces.



Sessions were advertised in the Brown County Democrat, on social media, on fliers posted around town, in Purdue Extension monthly newsletters, and via targeted invitation e-mails sent to specific community organizations and interested stakeholders. Although attendance was not especially high at any of the four sessions (ranging from 4 to 9 attendees, not including Purdue Extension Facilitators), we still felt it was important to offer an in-person option in several areas of the county. Many county residents do not have reliable high-speed internet that would allow them to fully participate in a virtual meeting, and we recognized that some people would prefer a paper survey and physical feedback options, rather than an online survey. Feedback and ideas gathered during these Community Open House sessions closely aligned with the data that was later collected as part of the Community Survey.

#### **Public Input from Open House Sessions:**

<b>Southern Brown Volunteer Fire Department, 9/15/20, 3-5pm, 7 attendees</b>
<b>Fairgrounds, 9/15/20, 6-8pm, 4 attendees</b>
<b>YMCA, 9/16/20, 11am-1p, 9 attendees</b>
<b>Fruitdale Fire Department, 9/16/20, 4-6pm, 4 attendees</b>

<b>What do you love about Brown County Parks and Rec?</b>
<b>Southern Brown Volunteer Fire Department, 9/15/20, 3-5pm, 7 attendees</b>
Salt Creek Trail
Salt Creek Trail
<b>Fairgrounds, 9/15/20, 6-8pm, 4 attendees</b>
Deer Run is very well maintained
Deer Run walking trail and wildflower meadow
The history of the area and its natural resources
Accessibility
Remote locations
Finished Salt Creek Trail will connect <u>many</u> rec assets
Skate Park has been used often by local kids. Gives them a good, safe space to play
Ditto, ditto, ditto, ditto
Ample options for hiking and biking
The amount of natural land
Super clean air
Hiking trails
Stream trails

Lakes: Yellowwood/Monroe
The Overlook (Bean Blossom)
Great local park
Great state park
Salt Creek Trail
The different 501c3 who are working to add their expertise for a better quality of life/place
<b>YMCA, 9/16/20, 11am-1p, 9 attendees</b>
Bike and walking trail to all the tourist sites in Nashville
It provides a break from at-home activities
I love all the public land recreation opportunities and Salt Creek Trail
Lots of playground options
<u>Love</u> the Salt Creek Trail and am so excited about the ultimate expansion
A profound focus on <u>youth</u> development via <u>multiple</u> opportunities (traditional athletics, skate park, etc)
We love the programs offered through BCPR. The Skate Park and Playground at Deer Run. We love kayaking in Yellowwood and hiking the trails in BCSP. We feel fortunate to be surrounded by so much natural beauty.
<b>Fruitdale Fire Department, 9/16/20, 4-6pm, 4 attendees</b>
Lots of variety of activities available
Ease of access
Accessibility is convenient
Quality of land
Good diversity of options and well-maintained
Brings the community together

<b>What do you want to see parks and open space look like in the future?</b>
<b>Southern Brown Volunteer Fire Department, 9/15/20, 3-5pm, 7 attendees</b>
Training pump track for kids/novices on mountain bikes
Bike skills building park
Focus on rebuilding wetlands combined with good access (ingress/egress) for creeks, kayaking, canoes, etc - gov't money to buy land to convert back to wetlands, businesses permitted to serve visitors (renting canoes, etc), CVB to keep up-to-date "stream/water level indicator" available on their website.
New boat ramp in Brown County
Better marketing and signage of recreational activities, trails, and related businesses/providers
More inclusive promotion of other mountain bike trail systems locally that are outside of state park
Canoe Club
Better use of floodplain areas for recreational use
Outdoor pickleball court in Van Buren or Nashville
Kids mountain bike club (include pass for them to use to access local trail systems)

Bike trails connect to Columbus
Outdoor pickleball courts
More community-based sports tournaments. I love sports events that people can get involved in. We need to promote health.
Outdoor Amphitheatre
Public park in Van Buren Township
<b>Fairgrounds, 9/15/20, 6-8pm, 4 attendees</b>
Better funded Parks & Rec Department
Completion of the Salt Creek Trail
Prioritize preserving our natural beauty and ecological health
<u>FESTIVALS</u>
More outdoor <u>game</u> spaces...boccee, horseshoes, disc golf, etc
<u>HAPPY HOUR</u> (plus drawing of beer stein)
More coordinated effort to drive locals to natural assets
Educational partnerships (esp around water resources)
Wetlands project - middle and north fork of Salt Creek, acquire a buffer on both forks and build out a wetland or forested area as a filter (40 year project)
More attention paid to the two forks of Salt Creek to maintain a stream trail with various take out points
Make stewardship of our natural areas a prominent part of our brand
More recreation opportunities (do something with Lincoln Pinch Park beyond benches and tables)
Adult intramural sports
Increased non-roadway connectivity to the various assets
Neighborhood parks
Finishing Tecumseh Trail
Increased number of coordinated group activities
Volunteer-based asset clean-up efforts
<b>YMCA, 9/16/20, 11am-1p, 9 attendees</b>
More social activities
I would like to see more colorful flowers and trail added along East SR 46 between police and Brown County Inn (would make a beautiful entrance into Nashville and enhance tourist to stay in town)
Would love to see expansion of trails to provide <u>safe</u> ways for youth to engage at YMCA and Deer Run!
Better pedestrian/non-motorist access between parks/trails/etc.
An aquatics center at Deer Run would be awesome.
Connecting Salt Creek Trail
2nd boat ramp on North Fork of Salt Creek
Free, consistent environmental education for Brown County (like a BC Parks & Rec Naturalist)
Playground in town limits or splash pad? Something for kids!

Environmental Education Center - the BCSP Nature Center is great, but you have to pay to see it!
I would like to see all Parks & Rec, Natural Resource Managers, and Environmental Orgs come together on an annual basis to discuss what's going on in Brown County! We have so many different people/agencies managing our natural areas and it would be great if we were all on the same page.
<b>Fruitdale Fire Department, 9/16/20, 4-6pm, 4 attendees</b>
Guided mushroom hunts
Public lands (including parking/access) layer on GIS. Include cemeteries?
Hopefully the Parks Dept will increase in size and diversity
Continue to maintain the quality of the parks
More control of invasive species, which are crowding out native species
Promote more environmental education with schools and social organizations
Deer Run Park to establish a pool
Finish the Salt Creek Trail
Better signage for nature preserves

## **Community Survey**

The Brown County Indiana Parks and Recreation Survey was available to the public from September 9, 2020 to December 4, 2020. The survey instrument had 35 questions and covered demographics, park use, programs, barriers to participation, types of park use and funding preferences. The survey was advertised in advance through the same methods used to advertise the Community Open House sessions (See Appendices - Pg. 66-79 for a copy of the survey.)

The survey was available online via Qualtrics, as well as available in paper format at the Brown County Purdue Extension office and during the four Community Open House sessions outlined above. A shortened paper survey was also provided at the Van Buren and Bill Monroe Pop-Up Food Pantries in November and December 2020. Paper responses were entered into Qualtrics by Purdue Extension – Brown County office staff.

The total number of responses was 336 and, for the most part, responses represented a household of more than one person. Unfortunately, we did not think to specifically ask how many people were in a respondent's household. However, one question asked respondents to "Select the age ranges of people living in their household (Child age 4 and under; Child age 5-12; Teen age 13-17; Adult age 18-24; Adult age 25-44; Adult age 45-64; Adult age 65 and older). Of the 182 respondents that answered this question, and using a conservative estimate of one person per household per age group checked, the average household size represented by the survey was 2.89 people per household. If this estimated minimum average household size is applied to the full set of 336 responses, then the survey data represents an estimated 967 residents, or 6.2% of the Brown County population.

No questions were "required" to be answered, and therefore response totals for some questions do not add up to the total number of respondents. Also, 57 of the responses were collected using the shortened paper survey that was administered at two separate Pop-Up Food Pantries in November and December 2020.

The summary of survey respondents' demographics is as follows:

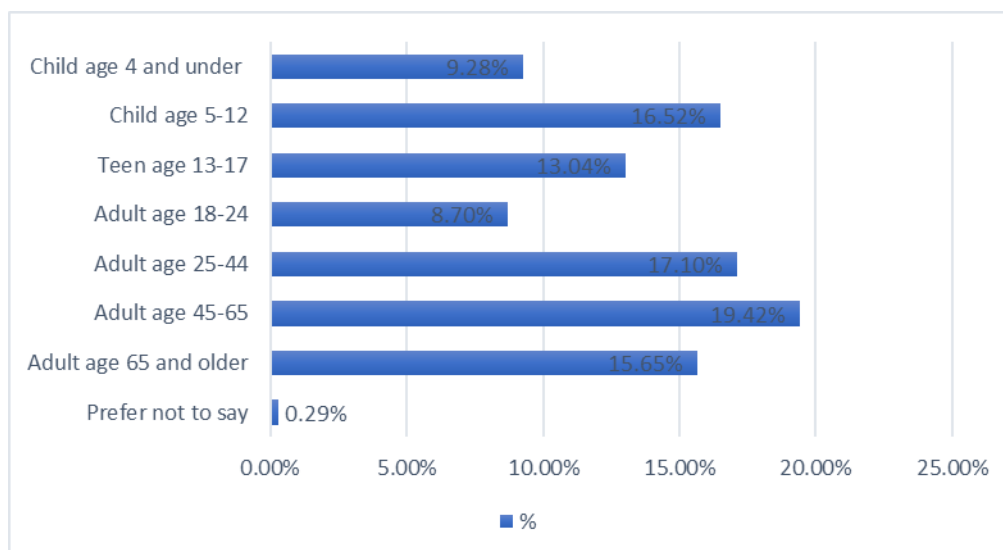
### Age (n=185)

Answer	%	Count	Brown Co Census %
Children Younger than 18	0%	0	17.1%
18 to 24 years	2.70%	5	6.0%
25 to 44 years	38.92%	72	20.1%
45 to 64 years	36.22%	67	31.1%
65 and over	22.16%	41	25.7%
Prefer not to say	0.00%	0	
Did Not Answer		147	
Total	100%	185	

It's possible that due to the virtual nature of the majority of the meetings, and the emphasis on completing the survey online, that it was more easily accessed by a younger demographic, accounting for the disproportionate percentage of 25-44 year olds (as compared to the overall population age distribution) completing the survey.

### Households by Age (n=182)

Survey respondents were asked to "Select the age ranges of all people living in your household."



### Gender of Survey Respondents (n=163)

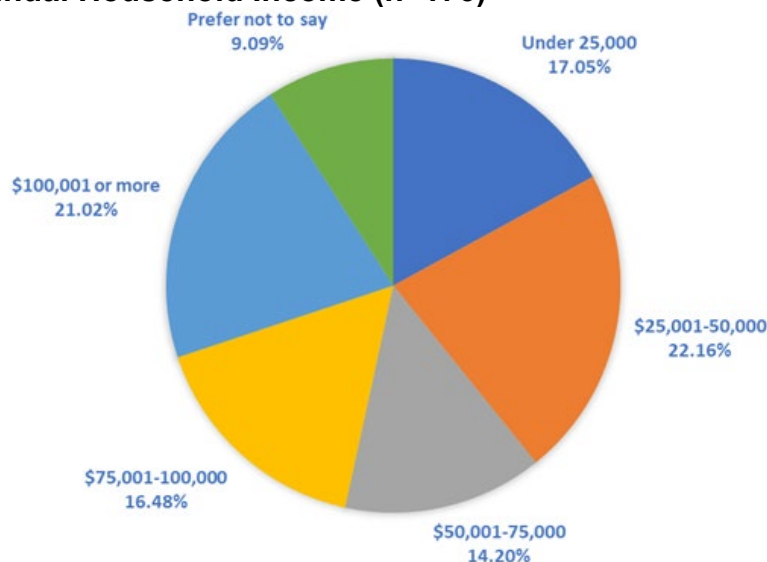
Answer	%	Count	Brown Co Census %
Female	78%	127	50.6%
Male	22%	36	49.4%
Total	100%	163	

### Education Level of Survey Respondents (n=131)

Answer	%	Count
Less than high school	0.00%	0
High school graduate (includes GED)	4.58%	6
Professional degree or more than Bachelor degree	32.06%	42
Some college, no degree	19.08%	25
Associate degree	11.45%	15
Bachelor degree	32.82%	43
Prefer not to say	0.00%	0
Total	100%	131

According to 2019 data from the US Census Bureau, 92.1% of Brown County residents have a high school degree or higher, while only 28.9% have a Bachelor's degree or higher. However, of the 131 survey respondents that answered this question, 95.42% report having a Bachelor's degree or higher.

### Annual Household Income (n=176)



**Race (n=128)**

<b>Answer</b>	<b>%</b>	<b>Count</b>	<b>Brown Co Census %</b>
<b>White</b>	89.8%	115	96.8%
<b>Black or African American</b>	0%	0	0.7%
<b>American Indian or Alaska Native</b>	0%	0	0.6%
<b>Asian</b>	0%	0	0.5%
<b>Native Hawaiian or Other Pacific Islander</b>	0%	0	Z (greater than zero but less than half unit of measure)
<b>Some Other Race</b>	0%	0	
<b>Two or More Races</b>	3.13%	4	1.4%
<b>Prefer Not to Say</b>	7.03%	9	
<b>Total</b>	100%	128	

**Ethnicity (n=128)**

<b>Answer</b>	<b>%</b>	<b>Count</b>	<b>Brown Co Census %</b>
<b>Hispanic</b>	0.78%	1	1.8%
<b>Non- Hispanic</b>	91.41%	117	95.3%
<b>Prefer Not to Say</b>	7.81%	10	
<b>Total</b>	100%	128	



## Working Groups

Three working group meetings were held virtually via Zoom (November 12, 2020 from 9a-11a; December 17, 2020 from 12p-2p; and February 10, 2021 from 11a-1p), and several working groups met separately to finish group-specific tasks that could not be completed as part of the larger working group meetings. Participants used Google JamBoards to document community assets and opportunities, and to develop, select, and prioritize strategies. During the final virtual activity participants developed action registers for each prioritized strategy. Participants identified funding sources, responsible parties, communications strategies, and evaluation criteria for the strategies.

The focus areas of the four working groups included: Active Living Environments, Healthy Food Environments, Placemaking, and Natural Resources & Conservation. The working groups developed a series of priorities and an Action Schedule addressing short, medium, and long-term goals. Several items from this Action Schedule have been adapted as priorities of the BCPRD 5-Year Plan.

- **Healthy Eating Environments** - Healthy Eating is consuming the recommended amounts and variety of foods and beverages that provide the nutrients needed to create energy for daily living, maintain and improve health, and prevent disease.

Name	Organization	Title	Working Group Role
Blake Connolly	Purdue Extension	Assistant Director, Nutrition Education Program (NEP)	Facilitator
Annie Eakin	Purdue Extension	Community Wellness Coordinator (CWC)	Lead
Nancy Schmutzler	Nashville Indiana Farmers Market	Board Member and Vendor Representative	Participant
Jim Schultz	Salt Creek Preservation Group; Peaceful Valley Heritage; Brown County Redevelopment		Participant
Scott Mills	Town of Nashville Bicycle and Pedestrian Master Plan ad hoc Committee	Committee Member	Participant
Christy Wrightsman	Brown County Schools Career Resource Center (CRC)	Director	Participant
Anna Hofstetter	Nashville Town Council and Town of Nashville Bicycle and Pedestrian Master Plan ad hoc Committee	Councilmember	Participant

- **Active Living Environments** - Active Living is a way of life that integrates physical activity into daily routines in order to meet the recommended levels of activity needed to perform the functions of daily living, maintain and enhance health, improve quality of life, and prevent disease.

<b>Name</b>	<b>Organization</b>	<b>Title</b>	<b>Working Group Role</b>
Daniel Walker	Purdue Extension / Illinois-Indiana Sea Grant	Community Planning Extension Specialist	Facilitator
Kim Robison	Brown County Community YMCA	Director	Lead
Erika Rudd	Town of Nashville Bicycle and Pedestrian Master Plan ad hoc Committee	Committee Member	Participant
Danielle Nolan	Brown County Bikes and DNK Presents	Owner	Participant
Kate Nolan	Brown County Bikes and DNK Presents	Owner	Participant
Linda Hobbs	Brown County Parks and Recreation Board & Brown County Community YMCA Board	Board Member	Participant
April Williams		Community Member; former Columbus Parks employee	Participant
Clifford Cressey	Town of Nashville Bicycle and Pedestrian Master Plan ad hoc Committee	Committee Member	Participant

- **Placemaking** - Effective placemaking processes are rooted in community-based participation and capitalize on a community's assets and spaces that promote people's health, happiness, potential to create public and well-being (Project for Public Spaces, 2014). The Land Policy Institute at Michigan State University defines placemaking simply as creating neighborhoods and communities where people want to live, work and play (Graebert et al., 2014). Placemaking practices in regards to parks and plazas, streetscapes, trails, walkability, and wayfinding all play a role in creating and encouraging healthy eating and active living environments.

Name	Organization	Title	Working Group Role
Kara Salazar	Purdue Extension / Illinois-Indiana Sea Grant	Assistant Program Leader and Extension Specialist for Sustainable Communities	Facilitator
Sean Hildreth	Brown County Community Foundation	Marketing, Communications, and Outreach Officer	Lead
Maddison Miller	Brown County Community Foundation	CEO	Participant
Christine Ritzmann	Brown County Planning and Zoning Department	Director	Participant
Greg Fox	Brown County Chamber of Commerce Board of Directors	President	Participant
Nancy Crocker	Nashville Town Council	Councilmember	Participant
Christy Wrightsman		Moved to Healthy Eating	Participant

- **Natural Resources and Conservation** - Natural resources (including forests, lakes, streams, etc) are an enormous part of the public space and recreation picture in Brown County. How do we maximize enjoyment of these natural spaces while also improving conservation and environmental value?.

Name	Organization	Title	Working Group Role
Kara Hammes	Purdue Extension	Brown County Extension Director; HHS & ANR Educator	Facilitator / Lead
Patrick Haulter	Indiana Department of Natural Resources	Brown County State Park Naturalist	Participant
Mark Shields	Brown County Parks & Recreation Department	Director	Participant
Maggie Sullivan	Friends of Lake Monroe	Lake Monroe Watershed Coordinator	Participant
Allison Shoaf / Liz Marthaler	Brown County Soil & Water Conservation District	District Director	Participant
Michael Spalding	Indiana Department of Natural Resources	Resource Supervisor, Morgan-Monroe and Yellowwood State Forests	Participant

### **Final Public Presentation of the Plan**

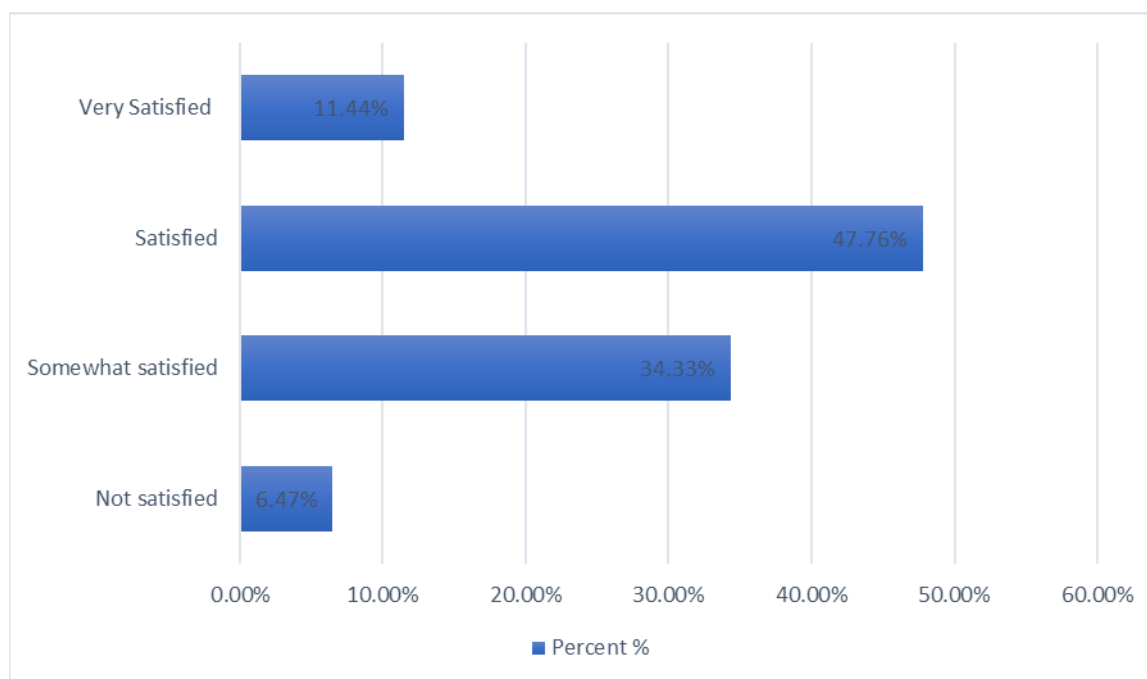
On Dec.3, 2021, copies of the final draft of the Brown County Parks and Recreation 5-year Master Plan were placed at the Brown County Parks and Recreation Office and the Purdue Extension – Brown County Office. Comment sheets, along with phone and e-mail contact information, were also available. The plan was also posted on the parks' website and shared via social media with e-mail and phone numbers available for comments. An overview of the plan and details for public comment was also included in the December 8, 2021 issue of the Brown County Democrat. December 15, 2021 was the submission deadline for written comments submission. Public comment and questions were also permitted during the regularly scheduled BCPR Board meeting on December 15, 2021 at 5:15pm.

## ***Summary/Comparison of Public Input***

The data presented below was gathered using the community survey that was outlined earlier in this report (Pg. 37-40)

### **Satisfaction with BCPRD Programming**

#### **Satisfaction of Recreational Programs Provided by Brown County Parks and Recreation Department (n=201)**

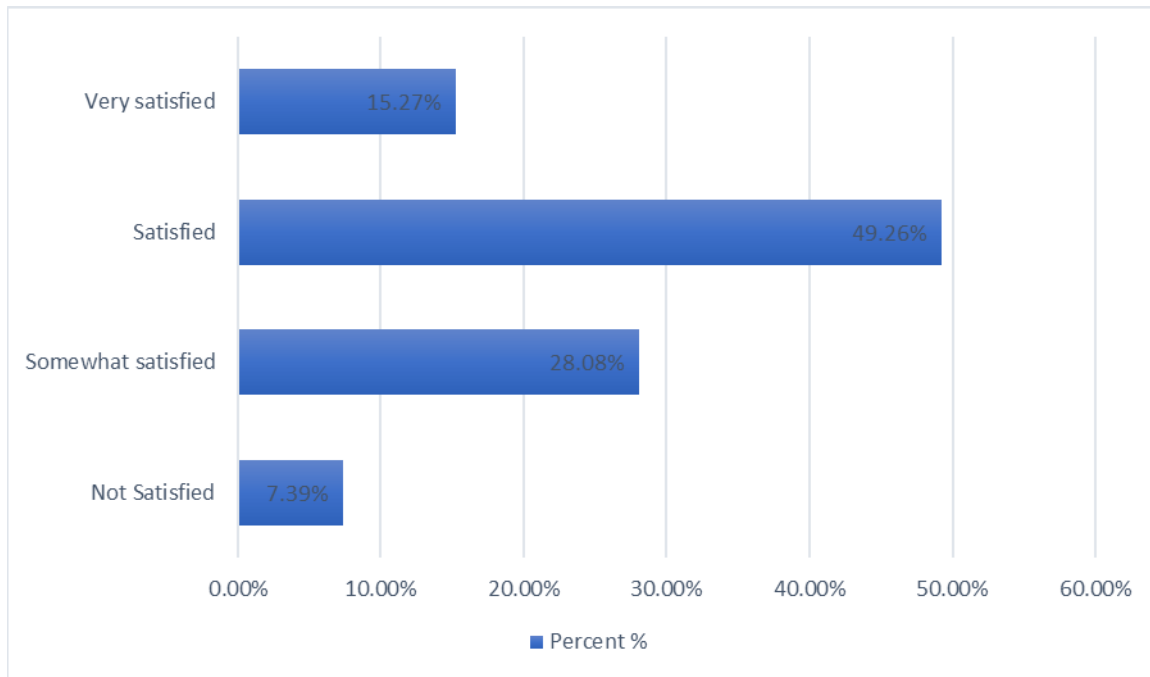


### **Summary of Comments Regarding BCPR Program Satisfaction**

- Increase accessibility
- Better advertising of offerings
- Consider coordinating sports with school athletics program
- Offer diverse program options for multiple age groups, think beyond youth sports
  - Suggestions include nature programs, martial arts, dance, outdoor pickleball courts at Deer Run Park, and more.

### Satisfaction with BCPRD Facilities

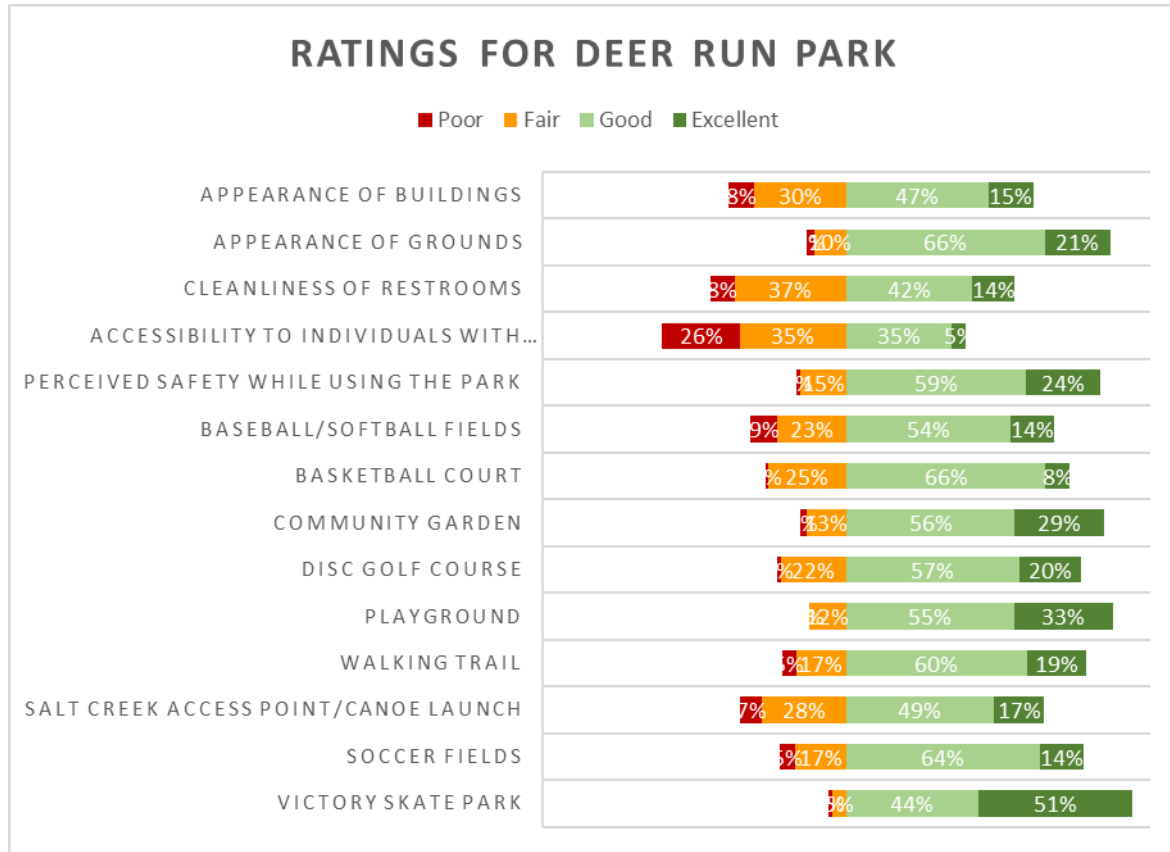
#### Satisfaction of Facilities Provided by Brown County Parks and Recreation Department (n=203)



#### Summary of Comments Regarding BCPR Facility Satisfaction

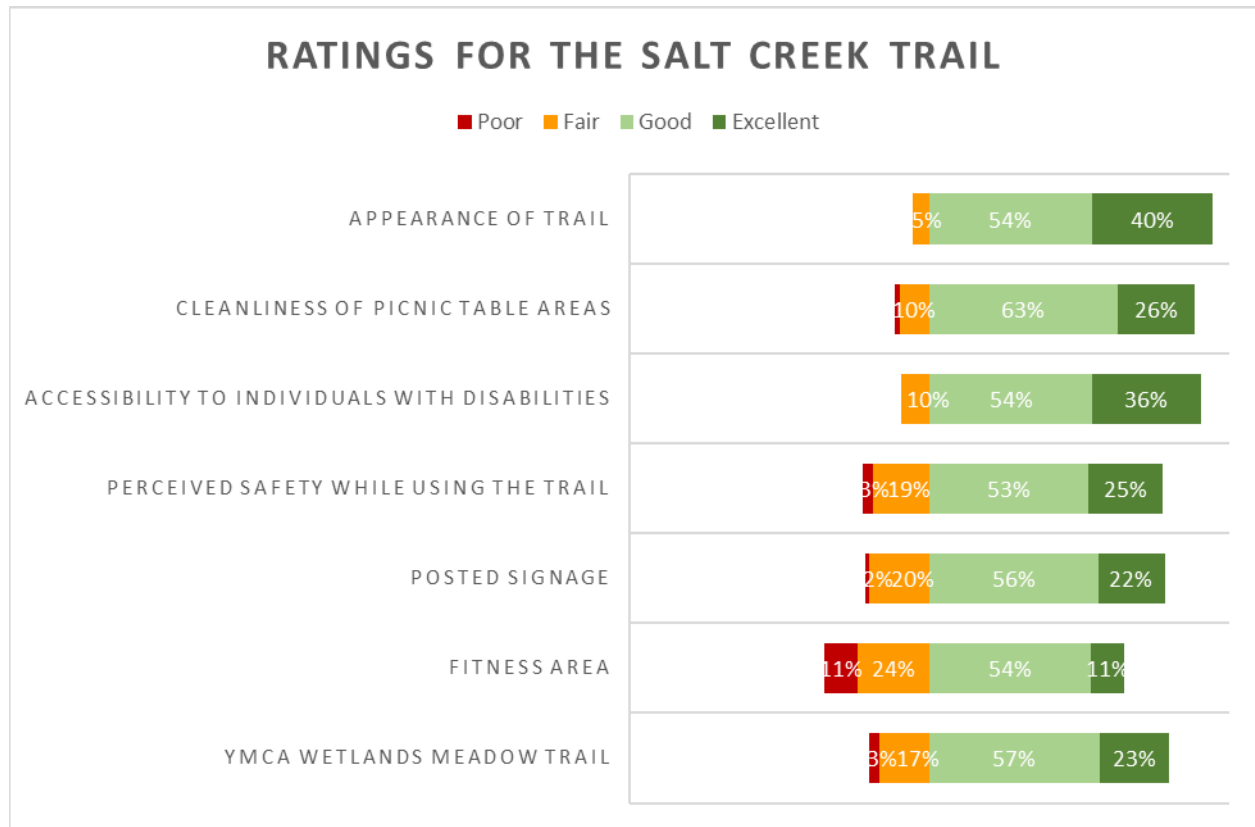
- Improve baseball/softball field drainage
- Add lights to baseball/softball fields
- Include more seating and shelter options
- Add more basketball courts
- Pave parking lot
- Include a dog park
- Add splash pads

## Ratings for Deer Run Park



	Excellent	Good	Fair	Poor	n
Appearance of buildings	14.69%	46.85%	30.07%	8.39%	143
Appearance of grounds	21.38%	65.52%	10.34%	2.76%	145
Cleanliness of restrooms	13.86%	41.58%	36.63%	7.92%	101
Accessibility to individuals with disabilities	4.65%	34.88%	34.88%	25.58%	86
Perceived safety while using the park	24.29%	59.29%	15.00%	1.43%	140
Baseball/Softball Fields	14.41%	54.05%	22.52%	9.01%	111
Basketball Court	7.84%	65.69%	25.49%	0.98%	102
Community Garden	29.29%	55.56%	13.13%	2.02%	99
Disc Golf Course	20.25%	56.96%	21.52%	1.27%	79
Playground	32.52%	55.28%	12.20%	0.00%	123
Walking Trail	19.27%	59.63%	16.51%	4.59%	109
Salt Creek Access Point/Canoe Launch	16.67%	48.61%	27.78%	6.94%	72
Soccer Fields	14.46%	63.86%	16.87%	4.82%	83
Victory Skate Park	50.59%	43.53%	4.71%	1.18%	85
Other (please specify)	20.00%	60.00%	20.00%	0.00%	5

## Ratings for Salt Creek Trail

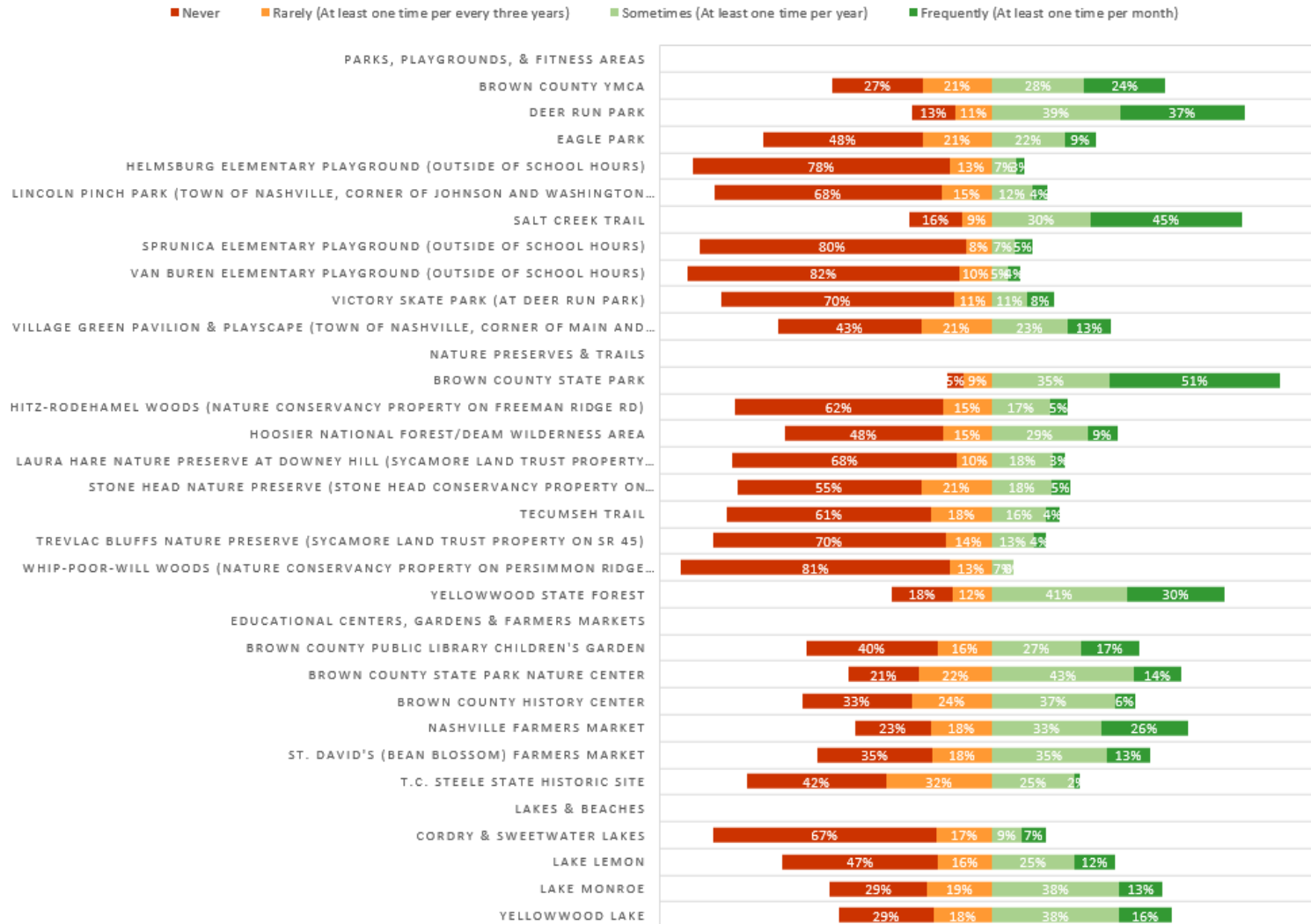


	Excellent	Good	Fair	Poor	n
<b>Appearance of trail</b>	40.41%	54.11%	5.48%	0.00%	146
<b>Cleanliness of picnic table areas</b>	25.95%	62.60%	9.92%	1.53%	131
<b>Accessibility to individuals with disabilities</b>	35.96%	54.39%	9.65%	0.00%	114
<b>Perceived safety while using the trail</b>	25.00%	52.78%	18.75%	3.47%	144
<b>Posted signage</b>	22.31%	56.15%	20.00%	1.54%	130
<b>Fitness Area</b>	11.00%	54.00%	24.00%	11.00%	100
<b>YMCA Wetlands Meadow Trail</b>	23.16%	56.84%	16.84%	3.16%	95
<b>Other (please specify)</b>	20.00%	10.00%	30.00%	40.00%	10



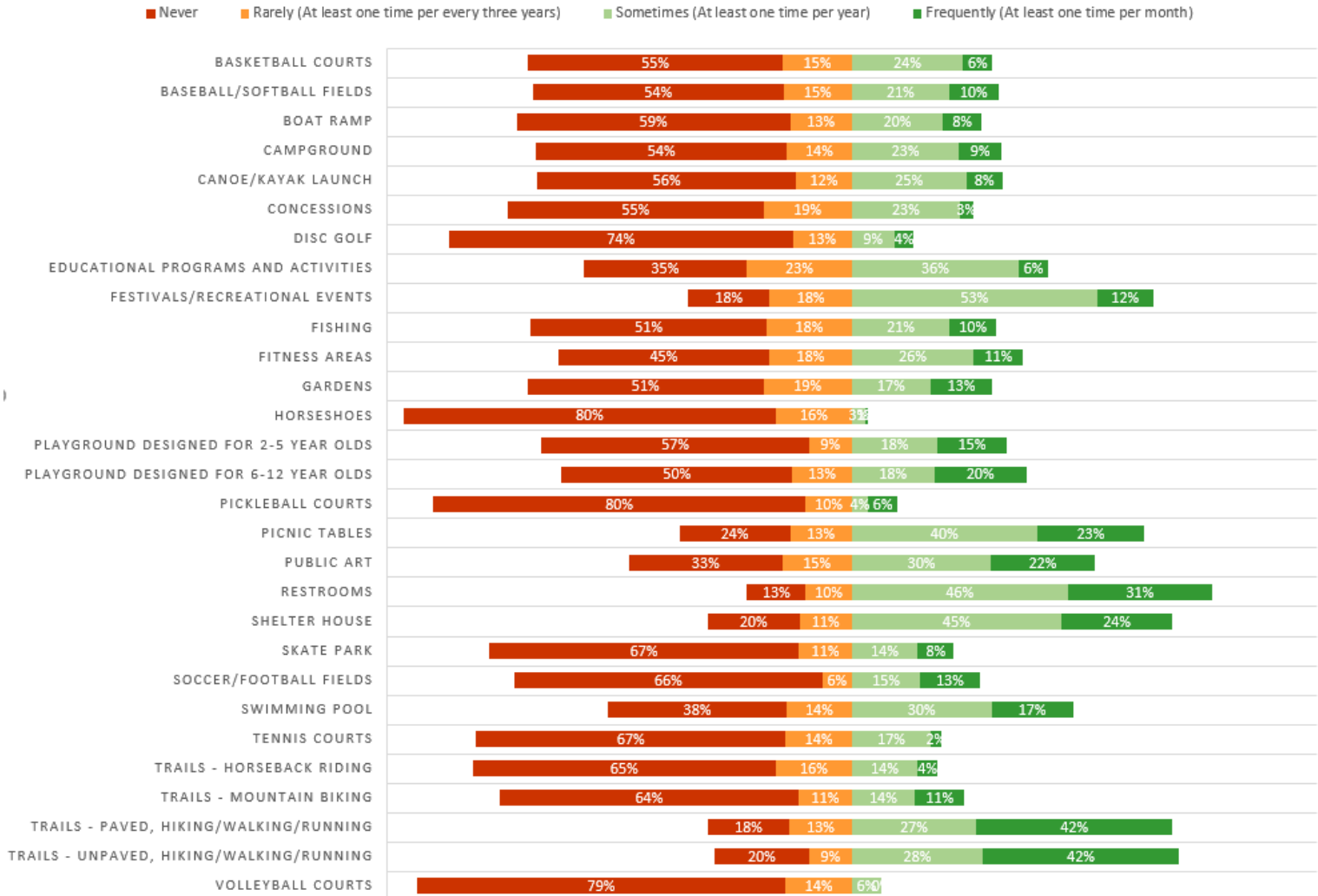
## Average Usage of Parks, Recreational Areas, and Public Spaces

### ON AVERAGE, HOW OFTEN DOES YOUR HOUSEHOLD USE PARKS, RECREATIONAL AREAS, & PUBLIC SPACES WITHIN BROWN COUNTY?



## Frequency of Usage of Recreational Facility, Amenity or Service Use

ON AVERAGE, HOW OFTEN DOES YOUR HOUSEHOLD USE THE EQUIPMENT, FACILITIES, AMENITIES, OR SERVICES LISTED BELOW AND AVAILABLE AT PARKS AND PUBLIC SPACES IN BROWN COUNTY?



## Brown County Parks and Recreation Department 5-Year Parks and Recreation Master Plan

### Favorite Recreational Programs

Respondents were asked to list up to three of their favorite recreational programs/activities in Brown County. Examples given as part of the question were sports leagues, competitions or races, festivals/parades, etc. Responses were as follows, with #1 ranked choices counted 3x; #2 ranked choices counted 2x; #3 ranked choices counted 1x:



**Brown County Parks and Recreation Department  
5-Year Parks and Recreation Master Plan**

<b>Favorite Programs</b>	<b># of Responses</b>	<b>% of All Responses</b>
Spring Blossom Parade	56	11%
Hiking	54	11%
Festivals & Parades	45	9%
Youth Sports	30	6%
Christmas Light Parade	23	5%
Youth Soccer	19	4%
Fall-o-Ween	17	3%
Farmers Market	16	3%
Mountain Biking	16	3%
Swimming	15	3%
Arts Programs & Tours	13	3%
Community Music Events	13	3%
Boating & Kayaking	11	2%
Camping	10	2%
Co-ed Softball	10	2%
Humane Society Events	9	2%
Pickleball	9	2%
Trick-or-Treat on the Trail	8	2%
Fishing	7	1%
Youth Baseball	7	1%
County Fair	6	1%
Horseback Riding	6	1%
Outdoor Movie Nights	6	1%
Running	6	1%
EPIC Mountain Bike Race	5	1%
Hilly Half	5	1%
Nature Center Programs	5	1%
All Others <5 Responses	61	13%

*#1 ranked choices counted 3x; #2 ranked choices counted 2x; #3 ranked choices counted 1x*

## Brown County Parks and Recreation Department 5-Year Parks and Recreation Master Plan

### Ideas for New Recreational Programs

Respondents were asked to list up to three ideas for NEW recreational programs/activities that they would like to see added in Brown County. Examples given as part of the question were sports leagues or fitness programs, educational programs, etc. Responses were as follows, with #1 ranked choices counted 3x; #2 ranked choices counted 2x; #3 ranked choices counted 1x:



**Brown County Parks and Recreation Department  
5-Year Parks and Recreation Master Plan**

<b>New Program Ideas</b>	<b># of Responses</b>	<b>% of All Responses</b>
<b>More Adult Sports Leagues</b>	<b>28</b>	<b>8%</b>
<b>More Youth Sports Leagues</b>	<b>27</b>	<b>8%</b>
<b>Yoga, Pilates, Tai Chi, etc</b>	<b>22</b>	<b>6%</b>
<b>Nature Programs &amp; Wildlife Events</b>	<b>20</b>	<b>6%</b>
<b>Art, Photography &amp; Craft classes, all types</b>	<b>17</b>	<b>5%</b>
<b>Backpacking &amp; Wilderness Survival Skills</b>	<b>16</b>	<b>5%</b>
<b>Activities for Seniors</b>	<b>15</b>	<b>4%</b>
<b>Martial Arts classes</b>	<b>14</b>	<b>4%</b>
<b>Pickleball League</b>	<b>14</b>	<b>4%</b>
<b>Dance classes</b>	<b>13</b>	<b>4%</b>
<b>Walking Group</b>	<b>12</b>	<b>3%</b>
<b>Hiking Club</b>	<b>11</b>	<b>3%</b>
<b>Kayak, Canoe, or Paddleboard Club</b>	<b>11</b>	<b>3%</b>
<b>Programming &amp; Clubs for Teens</b>	<b>11</b>	<b>3%</b>
<b>Cooking &amp; Culinary Skills Classes</b>	<b>10</b>	<b>3%</b>
<b>Gardening &amp; Homesteading Programming</b>	<b>9</b>	<b>3%</b>
<b>Fishing Club</b>	<b>8</b>	<b>2%</b>
<b>Mountain Bike Education</b>	<b>8</b>	<b>2%</b>
<b>Programs for Toddlers</b>	<b>7</b>	<b>2%</b>
<b>Food Festivals</b>	<b>6</b>	<b>2%</b>
<b>Geocaching</b>	<b>6</b>	<b>2%</b>
<b>Outdoor Fitness Classes</b>	<b>6</b>	<b>2%</b>
<b>History Tours</b>	<b>5</b>	<b>1%</b>
<b>Music Education</b>	<b>5</b>	<b>1%</b>
<b>All Others &lt;5 Responses</b>	<b>54</b>	<b>15%</b>

*#1 ranked choices counted 3x; #2 ranked choices counted 2x; #3 ranked choices counted 1x*

**Summary of Responses:**

- 93 responses included terms related to "All Ages Education and Instruction Activities (art, technology, gardening, health and wellness, teen programs, youth camps)
- 58 responses included the terms "Outdoor Activities and Events (boats, bikes, clubs, festivals, music, nature programs)"
- 54 responses included creating new and expanding sports programs for all ages.





**Brown County Parks and Recreation Department  
5-Year Parks and Recreation Master Plan**

<b>New Facility Ideas</b>	<b># of Responses</b>	<b>% of All Responses</b>
<b>Community/Rec Center</b>	<b>60</b>	<b>15%</b>
<b>More Paved Trails</b>	<b>49</b>	<b>12%</b>
<b>Finish Salt Creek Trail</b>	<b>24</b>	<b>6%</b>
<b>Pickleball Courts</b>	<b>21</b>	<b>5%</b>
<b>Splash Pad</b>	<b>20</b>	<b>5%</b>
<b>Trail to Deer Run</b>	<b>17</b>	<b>4%</b>
<b>Bike Skills course</b>	<b>16</b>	<b>4%</b>
<b>Skating Rink</b>	<b>15</b>	<b>4%</b>
<b>Aquatic Park</b>	<b>14</b>	<b>3%</b>
<b>Bike Lanes</b>	<b>14</b>	<b>3%</b>
<b>Safer Walking Routes</b>	<b>11</b>	<b>3%</b>
<b>Putt-Putt</b>	<b>10</b>	<b>2%</b>
<b>Rock Climbing Facility</b>	<b>9</b>	<b>2%</b>
<b>Shelter Houses</b>	<b>9</b>	<b>2%</b>
<b>Wellness Center</b>	<b>8</b>	<b>2%</b>
<b>Dog Park</b>	<b>7</b>	<b>2%</b>
<b>Tennis Courts</b>	<b>7</b>	<b>2%</b>
<b>Gun/archery range</b>	<b>6</b>	<b>1%</b>
<b>Movie Theater</b>	<b>6</b>	<b>1%</b>
<b>Playground in Town</b>	<b>6</b>	<b>1%</b>
<b>Racquetball</b>	<b>6</b>	<b>1%</b>
<b>Better signage for trails and parks</b>	<b>5</b>	<b>1%</b>
<b>Go-cart Track</b>	<b>5</b>	<b>1%</b>
<b>Horse Show Arena</b>	<b>5</b>	<b>1%</b>
<b>Outdoor Amphitheater</b>	<b>5</b>	<b>1%</b>
<b>All Others &lt;5 Responses</b>	<b>49</b>	<b>12%</b>

*#1 ranked choices counted 3x; #2 ranked choices counted 2x; #3 ranked choices counted 1x*

**Summary of Responses:**

- 120 responses included terms related to trails, paved, hiking, biking, water.
- 107 responses included terms related to facilities for indoor activity spaces to engage in sports, education programs, and gatherings/social activities for families, youth, and teens.
- 105 responses included terms related to new outdoor activity spaces such as parks with natural features and built features such as restrooms, shelters, skating rink, skate park, ball fields.
- 85 responses included terms related to splash pad, water features, pool.

## **Brown County Parks and Recreation Department 5-Year Parks and Recreation Master Plan**

### ***Emerging Themes***

When each type of public participation method is compared, a set of common themes begins to emerge. The following are the three most common themes (in no particular order):

- More programs for all ages, going beyond youth-based programs and sports leagues
- More options for indoor and year-round community-focused spaces and programming
- Addressing long-term maintenance needs of existing amenities and facilities

## **Needs and Issues Analysis**

Since the BCPRD is developing this master plan in-house, we are using a simplified issue analysis method in order to perform the required needs analysis. This analysis tallied results from each method of public input, the input from the park board and the park staff, and identified common themes from each method and condensed those themes into underlying issues. The issues were placed in a priority order based on financial and other constraints, then turned into a coherent priority and action plan.

### **General Issues from Public and Board/Staff Input**

- More programs for all ages, going beyond youth-based programs and sports leagues
- More options for indoor and year-round community-focused spaces and programming
- Accessibility of facilities, programs and policies; need to upgrade all to current ADA standards.
- Addressing long-term maintenance needs of existing amenities and facilities
- Lack of certain desired “signature amenities” within the community (most popular requests include an indoor, multi-purpose sport and community facility; bicycle pump track; outdoor pickleball court(s); splashpad/water feature)
- Limited availability of funding and manpower across the board.

## Brown County Parks and Recreation Department 5-Year Parks and Recreation Master Plan

### Issues Specific to Deer Run Park

Since Deer Run is the primary property – and only developed parkland, owned and managed by the BCPRD – many of the issues identified are specific to this facility:

- Lack of a safe, multi-use trail to access Deer Run Park via foot, bike, or other non-motorist transportation options. The Brown County Parks & Rec Department staff and Board believe that there should be increased focus, planning, and fundraising for the development of this type of trail and that this should take priority before adding any additional “signature amenities” to Deer Run Park.
- Lack of a detailed and comprehensive land use plan for Deer Run Park. Based on the realities of available funding, recent levels of participation in certain programs/leagues, the increasing frequency of flooding in some areas of the park, and the limited buildable space at the park – some existing physical amenities may need to be moved and certain programs or sports leagues may need to be altered or no longer offered. The discussion surrounding plans for existing versus new amenities is interconnected and needs to build upon the planning already done as part of this process. Examples of specific issues that need to be addressed include:
  - *Four lower ball diamonds in the floodway* - Repeated, and more frequent, annual flood events and rain has caused damage to the fields, fences, and dugouts; frequent practice and game cancellation; and high ongoing maintenance costs. Complete analysis on ongoing costs and issues, future scheduling needs, and potential alternatives to determine:
    - How many fields are needed to meet community recreational need, while balancing land availability and ongoing costs?
    - There are currently 6 total ball diamonds at Deer Run (4 lower and 2 upper). Can the two upper fields be renovated to

## **Brown County Parks and Recreation Department 5-Year Parks and Recreation Master Plan**

better accommodate different age league play? If lower fields will be decommissioned, will they be fully abandoned or will replacement fields be built elsewhere in the park?

- The old office building is also in the floodway, but is on much higher ground than the ball diamonds and has not been affected by recent annual flood events. However, the building is not ADA accessible and would need some work to be useable as any sort of community space. Regulations affecting renovations or new construction in the floodway mean that BCPRD must carefully consider how to proceed with this building. If it is removed or demolished, we will be limited in what type of replacement structure (if any) could go in its place.
- The disc golf course is an extremely popular feature at Deer Run Park, but some of the “tee pads” have also been affected by repeated flood events. The course also winds throughout most of the park, so any future new development would likely require moving or rerouting certain holes. Ideally, any long term solutions for stabilizing tee pads would be portable to allow for future reconfiguration.
- There is currently only one shelter house at the park, but this is one of the most used and most requested amenities. BCPRD staff would like to see the installation of one, or more, additional shelter houses for community use.
- Storage and organization of maintenance equipment and materials also needs to be addressed. The BCPR Director, new head Groundskeeper, and the Maintenance/mowing Volunteer Coordinator are already working together to plan and address these but, again, at this time we need to be continually weighing long term investment decisions against the eventual land use plan.

## **Brown County Parks and Recreation Department 5-Year Parks and Recreation Master Plan**

Potential solutions to these issues, as well as ideas for new facilities, could upset the “status quo” of the current park layout and program offerings, and we want to make sure we’re being as transparent, thorough, and strategic as possible with these changes for the community. Further discussion is needed to bring together all of the information, feedback, and financial projections that were gathered during the Master Plan process, along with gathering relevant stakeholders, to finish developing a detailed land use plan for Deer Run Park.



## **Priorities and Action Schedule**

### **Priorities for 2022 to 2027**

- Finalize a detailed and comprehensive land use plan for Deer Run Park. Plan should address issues and future plans for (at minimum) the:
  - Four lower ball diamonds in the floodway
  - Old office building
  - Disc golf course
  - Additional shelter house(s)
  - Maintenance equipment and supply storage
  - Possible access points for future multi-use trail from Nashville
  - Future “signature amenities,” such as an indoor, multi-purpose sport/community facility; bicycle pump track; outdoor pickleball court(s); splash pad/water feature; or potentially more than one of these items
- Create new educational, experiential, and “life-long learning” programs for people of all ages:
  - Include programs in the evening and on weekends
  - Review (and potentially expand) sports league offerings, but also provide other types of programming
  - Partner with other local organizations, businesses, and individuals to develop and offer this programming
  - Develop more consistent programming and/or rental option for existing BCPRD kayak and canoe equipment
- Identify ways to increase accessibility throughout existing facilities and programming. Improvements may need to be phased in for cost reasons, but need to be a priority. Possible focus areas include: addition of new accessible routes connecting all BCPRD parking areas, accessible restrooms, accessible shelters, and all other accessible park amenities.

## Brown County Parks and Recreation Department 5-Year Parks and Recreation Master Plan

- Increase focus, planning, and fundraising for the development of a safe, multi-use trail to access Deer Run Park via foot, bike, or other non-motorist transportation options. The Brown County Parks & Rec Department staff and Board should be involved as champions and advocates for this type of trail expansion and this planning should take priority before adding any further “signature amenities” to Deer Run Park.
- Overall greater and more targeted fundraising efforts

### Fundraising

Setting the priorities for this plan was difficult, as financial constraints are the primary limiting factor ongoing maintenance any new development or land acquisition for Brown County Parks & Recreation. In order to implement the priorities laid out below, BCPRD will also need to concentrate on fundraising of all types.

The citizens of Brown County have provided input into what they want from parks and recreation for the next five years and now it is time to figure out a way to pay for it. The Master Planning process has been useful in identifying previous fundraising efforts that are not supplying a sufficient return on our investment, and often are not truly in line with the primary focus of BCPR on serving our community, and the department and Board have already begun working on rethinking these efforts.

One important consideration of the fundraising process is the old truism: “It takes money to make money.” This is particularly true of the grant application process. Most grants have some variety of “match,” which requires that the grant recipient provide a required percentage of the total cost of the grant funded project. The Land and Water Conservation Fund for example, provides a 50% *reimbursement* of the costs of approved projects; which means that Brown County must raise *all of the money in advance* for any projects that we wish to build under this grant.

## **Brown County Parks and Recreation Department 5-Year Parks and Recreation Master Plan**

### Potential fundraising options:

- Municipal bonds.
- Sales taxes.
- Development impact fees/land donation requirements.
- User and entrance fees.
- Creative partnerships (with private and public entities).
- Grants (federal, state, foundation, non-profit, etc.).
- Donations:
  - In-kind, service and products.
  - Bequests.
  - Tax write-offs.
  - Corporate donations.
- Naming rights.
- Product sales (hats, t-shirts, etc.).
- Selective logging and timber sales at the 135 N property, or entering into the Forest Bank program with the Nature Conservancy
- Lease income from the planned cellular communication tower that will be built on a small parcel at the north west edge of Deer Run park. Payments will begin once the tower is built and leased. Initial payments will be \$12,000/year, with increases every 5 years, for 30 years.

**Brown County Parks and Recreation Department  
5-Year Parks and Recreation Master Plan**

***BCPRD System-wide Action Schedule***

Budget Year	Priority Item	Lead Entity	Potential Cost	Potential Funding Source
2022	Completion of detailed and comprehensive land use plan for Deer Run Park	BCPRD Staff and Board	Minimal, will be completed in-house	Existing BCPRD budget, as needed
2022+	Increased and targeted fundraising and revenue generation	BCPRD Staff and Board; Brown County Community Foundation	Estimated cost of fundraising varies; at least \$5,000 to \$10,000 for advertising, promotions, staffing, etc.	Program fees; sponsorships; Brown County Community Foundation; grants; donations and in-kind bequests; etc
2022+	Creation of new educational, experiential, and “life-long learning” programs for people of all ages	BCPRD Director and Program Specialist	Varies based on attendance, type of program, fees charged, etc.	BCPRD budget; fees and donations as needed
2023-2026	Convert and upgrade existing physical amenities to relevant ADA standards as funds allow	BCPRD Staff and Volunteers	Depends on the source of equipment and materials, potential for volunteer installation, scope of changes, etc. Costs estimated to be at least \$500,000, and likely higher	BCPRD budget; BCPRD non-reverting fund; grants; donations and in-kind; bequests; etc
2024-2026	Route approved, funding secured, and construction begins on multi-use path to access Deer Run Park from the Town of Nashville	Brown County Commissioners, Nashville Town Council, BCPRD Staff and Board	Costs depend on the exact route approved, number of times it must cross the Salt Creek, etc. Will be in the multi-million dollar range	Brown County Community Foundations; grants; donations and in-kind bequests; etc
2025+	Addition of one or more signature amenity(ies) to Deer Run Park	BCPRD Staff and Board	Costs depend on size/complexity of design of amenities; could range from \$75,000 to \$2,000,000+	Brown County Community Foundations; grants; donations and in-kind bequests; etc

**Brown County Parks and Recreation Department  
5-Year Parks and Recreation Master Plan**

## **Appendices: Brown County Parks and Recreation Master Plan Survey**

Brown County Parks & Rec, Purdue Extension, Brown County YMCA, and the Nashville Town Council & Parks Board are partnering to bring Purdue Extension's "Enhancing the Value of Public Spaces: Creating Healthy Communities" program to Brown County.

The purpose is to collect data and community feedback on how to manage and develop locally-owned parks and recreation spaces, facilities, and programs in Brown County. This effort also includes recreational services, activities, and installations that could be offered by local organizations.

This process includes gathering community data and community feedback. This survey is a very important element in receiving feedback from our community. We are interested to know what residents think about the programs and facilities in Brown County. Your opinion is valuable in this process, and we hope you will take this opportunity to share your thoughts. Your participation is voluntary, and all responses are optional and anonymous. The time to complete this survey is approximately 10-15 minutes.

Ultimately, the results of this survey and overall program will be available to the community and local organizations to guide their decision making and future planning. The Brown County Parks & Rec Board will also use the results of this process to develop and submit a 5-year Parks Master Plan to the Indiana Department of Natural Resources. This will allow for eligibility to additional grant funds and help the county parks board make decisions on land use and program development.

Those who wish to utilize a printed survey may get a copy at the Purdue Extension Office (802 Memorial Dr), Deer Run Park Office (1001 Deer Run Ln), the Brown County YMCA (105 Willow St), or the Brown County Public Library (205 Locust Ln). Or a pdf copy can be e-mailed to you if you contact Judy Hamilton at [hamil200@purdue.edu](mailto:hamil200@purdue.edu) or 812-988-5495.

For questions related to the Master Plan Update process, please contact Brown County Parks & Rec by calling 812-988-5522 or emailing [shieldsma@browncounty-in.us](mailto:shieldsma@browncounty-in.us). Purdue University Extension is administering the survey and collecting and analyzing the feedback data for use in the Master Plan. For questions related to this feedback survey, please contact Kara Salazar ([salazark@purdue.edu](mailto:salazark@purdue.edu)), Michael Wilcox ([wilcox16@purdue.edu](mailto:wilcox16@purdue.edu)), or Kara Hammes ([khammes@purdue.edu](mailto:khammes@purdue.edu)). Thank you for completing this survey.

### **MISSION STATEMENT - BROWN COUNTY PARKS & REC**

The mission of the Brown County Parks & Recreation Department is to improve the quality of life by providing a variety of recreational, leisure and aesthetic opportunities for all citizens, while conserving and enhancing the natural environment for the benefit of present and future generations.

### **BROWN COUNTY YMCA**

At the Brown County YMCA, we are committed to strengthening our communities and improving the health and well-being of everyone we serve. With programs that focus on youth development, healthy living and social responsibility, the YMCA is the place where you can learn, grow and thrive.

**Brown County Parks and Recreation Department  
5-Year Parks and Recreation Master Plan**

1a) Overall, how satisfied are you with the current recreational programs of the **Brown County Parks & Recreation Department** (youth and adult sports leagues, events at Deer Run Park, etc)?

- ☐ Very satisfied
- ☐ Satisfied
- ☐ Somewhat satisfied
- ☐ Not satisfied

1b) Additional comments?

---

---

---

2a) Overall, how satisfied are you with the current facilities of the **Brown County Parks & Recreation Department** (namely, Deer Run Park)?

- ☐ Very satisfied
- ☐ Satisfied
- ☐ Somewhat satisfied
- ☐ Not satisfied

2b) Additional comments?

---

---

---

3a) Overall, how satisfied are you with the current programs of the **Brown County YMCA**?

- ☐ Very satisfied
- ☐ Satisfied
- ☐ Somewhat satisfied
- ☐ Not satisfied

3b) Additional comments?

---

---

---

**Brown County Parks and Recreation Department  
5-Year Parks and Recreation Master Plan**

4a) Overall, how satisfied are you with the current facilities of the **Brown County YMCA**?

- ☐ Very satisfied
- ☐ Satisfied
- ☐ Somewhat satisfied
- ☐ Not satisfied

4b) Additional Comments?

5a) Overall, how satisfied are you with the current recreational programs of the **Town of Nashville**?

- ☐ Very satisfied
- ☐ Satisfied
- ☐ Somewhat satisfied
- ☐ Not satisfied

5b) Additional comments?

---

---

---

6a) Overall, how satisfied are you with the current parks and public facilities of the **Town of Nashville**?

- ☐ Very satisfied
- ☐ Satisfied
- ☐ Somewhat satisfied
- ☐ Not satisfied

6b) Additional comments?

---

---

---



**Brown County Parks and Recreation Department  
5-Year Parks and Recreation Master Plan**

7) On average, how often does your household use these Parks, Playgrounds, & Fitness Areas within Brown County? (Make a selection for each park or facility listed)

	Frequently (At least one time per month)	Sometimes (At least one time per year)	Rarely (At least one time per every three years)	Never
Brown County YMCA				
Deer Run Park				
Eagle Park				
Helmsburg Elementary playground (outside of school hours)				
Lincoln Pinch Park (Town of Nashville, corner of Johnson and Washington Streets)				
Salt Creek Trail				
Sprunica Elementary playground (outside of school hours)				
Van Buren Elementary playground (outside of school hours)				
Victory Skate Park (at Deer Run Park)				
Village Green Pavilion & Playscape (Town of Nashville, corner of Main and Jefferson Streets)				
Other (please specify)				

**Brown County Parks and Recreation Department  
5-Year Parks and Recreation Master Plan**

8) Please rate **Deer Run Park** (owned by Brown County Parks & Rec) for the following:

	Excellent	Good	Fair	Poor	I don't know
Appearance of buildings					
Appearance of grounds					
Cleanliness of restrooms					
Accessibility to individuals with disabilities					
Perceived safety while using the park					
Baseball/Softball Fields					
Basketball Court					
Community Garden					
Disc Golf Course					
Playground					
Walking Trail					
Salt Creek Access Point/Canoe Launch					
Soccer Fields					
Victory Skate Park					
Other (please specify)					

**Brown County Parks and Recreation Department  
5-Year Parks and Recreation Master Plan**

9) Please rate the **Brown County YMCA** for the following:

	Excellent	Good	Fair	Poor	I don't know
Appearance of buildings					
Appearance of grounds					
Cleanliness of restrooms/locker rooms					
Accessibility to individuals with disabilities					
Perceived safety while using the facility					
Basketball Courts/Gymnasium					
Swimming Pool					
Sauna					
Steam Room					
Child Care					
Fitness Equipment					
Multi-purpose Room					
Salt Creek Trail					
Salt Creek Trail - Fitness Area					
Salt Creek Trail - Wetlands Meadow Trail					
Other (please specify)					

**Brown County Parks and Recreation Department  
5-Year Parks and Recreation Master Plan**

10) Please rate the **Salt Creek Trail** for the following:

	Excellent	Good	Fair	Poor	I don't know
Appearance of trail					
Cleanliness of picnic table areas					
Accessibility to individuals with disabilities					
Perceived safety while using the trail					
Posted signage					
Fitness Area					
YMCA Wetlands Meadow Trail					
Other (please specify)					

11) Please rate the **Town of Nashville Parks** for the following:

	Excellent	Good	Fair	Poor	I don't know
Appearance of buildings					
Appearance of grounds					
Cleanliness of restrooms					
Accessibility to individuals with disabilities					
Perceived safety while using public amenities					
Lincoln Pinch Park (Corner of Johnson and Washington Streets)					
Village Green Playscape (Corner of Main and Jefferson Streets)					
Other (please specify)					

**Brown County Parks and Recreation Department  
5-Year Parks and Recreation Master Plan**

12) On average, how often does your household use these **Nature Preserves & Trails** within Brown County? (Make a selection for each park or facility listed)

	Frequently (At least one time per month)	Sometimes (At least one time per year)	Rarely (At least one time per every three years)	Never
Brown County State Park				
Hitz-Rodehamel Woods (Nature Conservancy property on Freeman Ridge Rd)				
Hoosier National Forest/Deam Wilderness Area				
Laura Hare Nature Preserve at Downey Hill (Sycamore Land Trust property on Valley Branch Rd)				
Stone Head Nature Preserve (Stone Head Conservancy property on Bellsville Pike)				
Tecumseh Trail				
Trevlac Bluffs Nature Preserve (Sycamore Land Trust property on SR 45)				
Whip-poor-will Woods (Nature Conservancy property on Persimmon Ridge Rd)				
Yellowwood State Forest				
Other (please specify)				

**Brown County Parks and Recreation Department  
5-Year Parks and Recreation Master Plan**

13) On average, how often does your household use these **Educational Centers, Gardens & Farmers Markets** within Brown County? (Make a selection for each park or facility listed)

	Frequently (At least one time per month)	Sometimes (At least one time per year)	Rarely (At least one time per every three years)	Never
Brown County Public Library Children's Garden				
Brown County State Park Nature Center				
Brown County History Center				
Nashville Farmers Market				
St. David's (Bean Blossom) Farmers Market				
T.C. Steele State Historic Site				
Other (please specify)				

14) On average, how often does your household use these **Lakes & Beaches** within Brown County? (Make a selection for each park or facility listed)

	Frequently (At least one time per month)	Sometimes (At least one time per year)	Rarely (At least one time per every three years)	Never
Cordry & Sweetwater Lakes				
Lake Lemon				
Lake Monroe				
Yellowwood Lake				
Other (please specify)				

## Brown County Parks and Recreation Department 5-Year Parks and Recreation Master Plan

15) Review the list on the next page of the equipment, facilities, amenities or services available at parks and public spaces in Brown County. Make a selection for each park or facility listed by the frequency you, or members of your household, use them.

	Frequently (At least one time per month)	Sometimes (At least one time per year)	Rarely (At least one time per every three years)	Never
Basketball courts				
Baseball/softball fields				
Boat ramp				
Campground				
Canoe/Kayak Launch				
Concessions				
Disc Golf				
Educational programs and activities				
Festivals/recreational events				
Fishing				
Fitness areas				
Gardens				
Horseshoes				
Playground designed for 2-5 year olds				
Playground designed for 6-12 year olds				
Pickleball courts				
Picnic tables				
Public art				
Restrooms				
Shelter house				
Skate Park				
Soccer/Football Fields				
Swimming pool				
Tennis Courts				

## Brown County Parks and Recreation Department 5-Year Parks and Recreation Master Plan

Trails - Horseback Riding				
Trails - Mountain Biking				
Trails - Paved, Hiking/Walking/Running				
Trails - Unpaved, Hiking/Walking/Running				
Volleyball courts				
Other (please specify)				

16) List any equipment, facility, amenities, or services at parks and public spaces, that are not listed above, that you or members of your household frequently use.

---

---

---

---

---

17) Please list up to three of your favorite recreational programs/activities/events in Brown County (such as sports leagues, competitions or races, festivals/parades, etc):

#1: 

---

#2: 

---

#3: 

---

18) If you don't participate in any recreational programs/activities/events in Brown County, why not? Select all that apply.

- ☐ None of the choices meet my interests/needs
- ☐ Not aware of program options
- ☐ Relevant options do not fit my schedule
- ☐ Fees are too expensive
- ☐ I don't have access to transportation
- ☐ Other reason (please specify)

---

19) What types of NEW recreation programs would you like to see added in Brown County? (Possible examples include specific types of sports leagues or fitness programs, educational programs, etc).

New Program Idea #1 

---

New Program Idea #2 

---

Additional Program Ideas 

---

---



**Brown County Parks and Recreation Department**  
**5-Year Parks and Recreation Master Plan**

20) What types of NEW recreation **facilities** would you like to see added in Brown County? (Possible examples include sports courts or fields, trails, buildings, etc).

New Facility Idea #1 \_\_\_\_\_

New Facility Idea #2 \_\_\_\_\_

Additional New Facility Ideas \_\_\_\_\_

21) Where would you like to see more Brown County recreational facilities located:

- ☐ Hamblen Township (Gatesville, Spearsville, Cordry-Sweetwater, etc)
- ☐ Jackson Township (Bean Blossom, Helmsburg, Trevlac, Waycross, Fruitdale, etc)
- ☐ Van Buren Township (New Bellsville, Stonehead, Becks Grove, Christianburg, Story, Elkinsville, etc)
- ☐ Washington Township (Nashville, Belmont, Gnaw Bone, etc)
- ☐ Within the town limits of the Town of Nashville

Other/more specific location:

\_\_\_\_\_

22) Please indicate where you obtain information about recreational programs and services in Brown County. Select all that apply.

- ☐ Word of mouth
- ☐ Brown County Democrat
- ☐ Social Media (Specify Facebook, Instagram, etc)

\_\_\_\_\_

- ☐ T.V.
- ☐ Radio
- ☐ Announcements sent home through the schools
- ☐ Other (please specify) \_\_\_\_\_

23) How do you commonly access recreational programs and facilities in Brown County? Select all that apply.

- ☐ Car
- ☐ Bike
- ☐ Brown County Access Bus
- ☐ Walk

24) How should parks and recreation services be supported in Brown County?

- ☐ Self-supported through program fees and admissions
- ☐ Supported by taxes
- ☐ Combination of self-supported and taxes

25) Do you live in Brown County?

- ☐ Yes
- ☐ No

**Brown County Parks and Recreation Department  
5-Year Parks and Recreation Master Plan**

26) Please enter the zip code of your primary residence:

---

27) Do you have any additional comments or feedback on the parks, public spaces, or recreational amenities of Brown County?

---

---

---

---

---

The next section contains questions about demographics. Please note that these questions are optional and anonymous. Your responses will help us understand who is using our services and how well this survey represents the population of Brown County. Please help us to better understand who is using our services by providing the following demographic information

28) What is your age range?

- ☐ 18 to 24 years
- ☐ 25 to 44 years
- ☐ 45 to 64 years
- ☐ 65 and over
- ☐ Prefer not to say

29) Please select the age ranges of people living in your household. Select all that apply.

- ☐ Child age 4 and under (1)
- ☐ Child age 5-12 (2)
- ☐ Teen age 13-17 (3)
- ☐ Adult age 18-24 (4)
- ☐ Adult age 25-44 (8)
- ☐ Adult age 45-64 (5)
- ☐ Adult age 65 and older (6)
- ☐ Prefer not to say (7)

30) What is your gender?

---

31) What is your ethnicity?

- ☐ Hispanic
- ☐ Non-hispanic
- ☐ Prefer not to say

**Brown County Parks and Recreation Department  
5-Year Parks and Recreation Master Plan**

32) What is your race?

- ☐ White
- ☐ Black or African American
- ☐ American Indian or Alaska Native
- ☐ Asian
- ☐ Native Hawaiian or Other Pacific Islander
- ☐ Some other race
- ☐ Two or more races
- ☐ Prefer not to say

33) What is the primary language you speak at home?

- ☐ English
- ☐ Spanish
- ☐ Other (please specify) \_\_\_\_\_
- ☐ Prefer not to say

34) What is your annual household income?

- ☐ Under \$25,000
- ☐ \$25,001-50,000
- ☐ \$50,001-\$75,000
- ☐ \$75,001-100,000
- ☐ \$100,001 or more
- ☐ Prefer not to say

35) What is your highest education level achieved?

- ☐ Less than high school
- ☐ High school graduate (includes GED)
- ☐ Some college, no degree
- ☐ Associate degree
- ☐ Bachelor degree
- ☐ Professional degree or more than Bachelor degree
- ☐ Prefer not to say